

# Snails lead to Tsunamis - it's caning time on April 5!

From: Northwest Polymer Clay Guild Newsletter <newsletter@nwpcg.org>

To: Maria Jam <mjbrown@krollmap.com>

Volume 24 | Issue 04 | April 2017

[View this email in your browser](#)



Northwest Polymer Clay Guild

# Clay Play



## **Guild Highlights**

**Election, Camp & Cane Updates**

## **Board Meeting**

April 5 | 5:30 p.m.

| [Artworks](#)

## March 1 | [By Ria M Hoyt](#)

It's official! During the last Board Meeting, the election commenced as it only could. There were no nominees so Maria Brown was re-elected by the Board with landslide ayes to remain our Vice President for Membership for the next term. We currently have 55 members and 12 pending for renewals.

After the very quick election, the Board started discussion about Clay Camp and it's with great pleasure for me to announce that registration is now open. Maria worked her magic and Clay Camp has been open for registration since Friday, March 24, 2017. We also released an updated Clay Camp Guide on March 25 with FAQs, registration and scholarship links, and more. If you did not get a copy, please send me an [email](#) and I will forward it to you. I also included a button at the bottom of this newsletter which will lead you to the [Camp Guide](#). A popular request from previous years has also been answered – single occupancy rooms are now available! Be sure to register early because these rooms are limited.

Aside from Clay Camp, we have several big activities to look forward to this year and much planning is already underway. Katie Weibel, Outreach Coordinator, or Liz White, President, will coordinate with the WA State Fair organizers if we can have additional demo dates. Terri Standley, our Treasurer, will be hosting regular Southend Clay Days. We previously announced that this will happen every fourth Friday of the month, please note that this should have been every fourth *Saturday*. That said, dates may change, so please check our [website](#) for the latest information.

Our website is being revamped with help from Janette Mendoza of [WP Plus Design](#), my sister-in-law, who is donating her professional Wordpress skills to the Guild. Yey!

Liz also announced that the Northwest Bead Society is looking for bead donations for their upcoming May retreat. Anybody who is interested in donating should contact Liz to coordinate. In the same vein, I proposed a similar project for our Guild and have started contacting

*The NWPCG Board meeting will be held before the General Meeting. If you have any concerns please [email](#) any of the Board members.*

---

### **General Meeting & PC Cane demos**

April 5 | 6:30 p.m.

| [Artworks](#)

*The General Meeting will be followed by the Tsunami and Snail Trail polymer clay canes demos by Kim Day and Cathy Gilbert respectively. [Please refer to March issue for materials list.](#)*

---

### **Clay Day**

April 15 | 9:00 a.m. - 5:00

p.m. | [Third Place Commons](#)

*Clay with us! Bring the project you're working on or just come and hang out.*

---

### **Clay Meetup Southend**

April 29 | 10:00 a.m. - 5:00

p.m. | [Hillside Community Church](#)

*Terri Standley is hosting a clay meetup every fourth Saturday of the month. An oven will be available at the venue so projects can be baked.*

---

### **June Program**

May 3 | 6:30 p.m. | [Artworks](#)

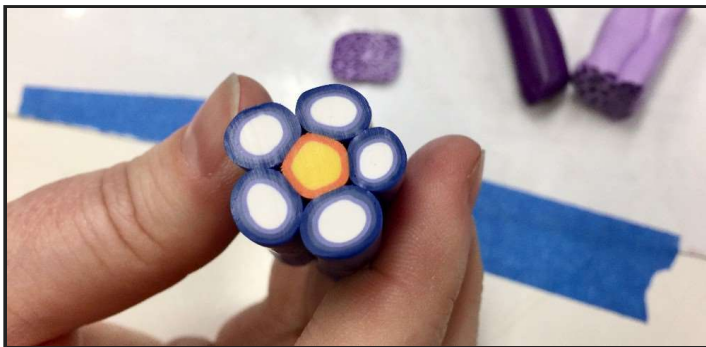
polymer clay manufacturers, suppliers and art stores for donations for our Clay Camp 2017 swag bags and Camp Prizes. Cross your fingers – we'll have exciting surprises for all Clay Camp goers! If you have suggestions on who we should approach, please send me an [email](#).

The Guild also received donations from Lynne Curtis from Portland, OR and Jessica Wailes from Puyallup, WA; Betty Mehlhoff and Susan Locsin spread them out in the backroom and members were given free access to a large amount of materials they could select from and take home for free. The best stuff were reserved for Clay Camp non-raffle raffles, so that's another great surprise to look forward to. Thank you Lynne and Jessica!



*Transparent covered by white makes the base for a dainty lace cane*

After excitedly browsing through the freebies, the members settled down for the Bull's Eye Cane Bonanza. Cathy Gilbert, VP Programs, breezed us through several designs and techniques at making complex canes using the basic bull's eye cane. Cathy started off with the dainty lace cane to beautiful flowers and feathers.



*The blue in this cane is made with several layers of slightly different colors creating a nice gradient effect.*

*It's Clay Social! Bring the projects you are working on or simply come to be with friends.*

---

### **Help Promote Clay Camp**



*Help us spread the word about the NWPCG Clay Camp, [download this teaser poster](#) and repost in your Facebook, Twitter, Instagram and other social media pages. Even only one repost helps.*

---

### **Artist Trading Cards**

*Check out the wide variety of Artist Trading Cards exchanged at the March 15 deadline. [Go to this link to view the album.](#)*

---

### **Contact our Board Members**

*If you need to contact any of our Board Members, the full list of emails is available on our website. [Please click here to view the list.](#)*

---

### **Connect on Pinterest**



Member works (top to bottom, left to right): Flower cane by Susan Locsin; Feather canes by Kim Day & Cathy Gilbert; Flower cane by Terri Standley; Feather cane by Terri Standley

Members followed along as Cathy demoed the various designs you can make while chicken-me, took pictures and videos and will try the canes at home later so nobody can see the mess I make. If you missed it or need help getting started (like I do!) check out [Cathy's blog for the full tutorials](#):

- [Part 1 - Lace Cane](#);
- [Part 2 - Flower Cane](#);
- [Part 3 - Complex Cane](#);
- [Part 4 - Leaf Cane](#); and
- [Part 5 - Feather Cane](#).

It was a lovely and fun lesson – thanks Cathy!

[For the full March 25 Board Minutes, please click here.](#)

Look for

[www.pinterest.com/nwpcg1994](http://www.pinterest.com/nwpcg1994)

and share ideas and inspirations with us. If you want to pin, email Ria at [newsletter@nwpcg.org](mailto:newsletter@nwpcg.org).

---

### **Connect on Instagram**

Look

for [www.instagram.com/nwpcg1994](http://www.instagram.com/nwpcg1994)

and follow us! If you want your project featured, just send Ria an email at [newsletter@nwpcg.org](mailto:newsletter@nwpcg.org) with the photo and a caption.

---

### **Amazon Smile**

Did you know that we are an [Amazon Affiliate](#)? With every eligible purchase you make using this [link](#), Amazon will donate 0.5% to our Guild.

---

### **Write for the newsletter**

Do you have a product, book or tool you want to review, or perhaps you want to write a tutorial? Email Ria at [newsletter@nwpcg.org](mailto:newsletter@nwpcg.org).

---

## **May Program: Clay Social**

By Cathy Gilbert | May 3 | 6:30pm | [Artworks](#)





Bring your clay, tools and yourself, and enjoy an evening of crafting with fellow polymer clayers. Can't figure out what to do? Try completing something that's been hanging around for a while. Clay Camp is also coming up, why not get a jump on the bead pair swap? Or, just come and get inspiration from someone – we have SO many great artists who are more than happy to share. And if you're not in a claying mood? Come for the company and fun (and, quite often, food!). See you there!

---



President's Message By Liz White

## Happy Camper

I didn't seriously think about attending Clay Camp until another member told me about the kitchen. As a vegan, I am wary of group meals but the kitchen staff at Camp Huston are very accommodating and I have really enjoyed the delicious and varied vegan options available at every meal. They are also conscientious about their gluten-free (GF) options (including a dedicated toaster for GF bread).

It really is a treat to be sitting at your workspace, working on your project, and one of the friendly staff comes out and announces the meal is ready. You enter the adjoining dining room, gaze at the trees through the tall windows, and eat with gusto. Then it's back to your clay or perhaps a walk in the woods. There are several trails on the property, including one going down to the Skagit River. On the other side of camp is Wallace Falls State Park.

When I was an active member of the Northwest Bead Society, I heard about their retreats, but my children – twins – were younger then and my husband worked weekends, so it was never an option. Clay Camp is the only crafting retreat I have ever attended and I look forward to it every year.

I was nervous the first year I attended and only spent one night. The past three years, however, I have stayed for the duration. I have enjoyed the classes I've taken, made many new friends, learned a ton, and been inspired by walking around the workspace looking at all the different projects.

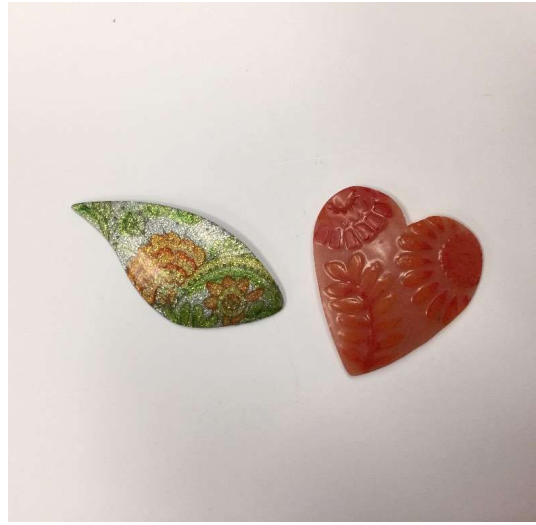
Come and see for yourself what Clay Camp is like. Come for one or several days. Take a class or spend the entire day at your work space. Scholarships for members are available and it will cover half of the registration fee. Treat yourself. Creativity is good for the soul.

**Liz White**

[president@nwpcg.org](mailto:president@nwpcg.org)

---

# Show & Tell



Covered Altoid tin (left) and charms (right) by Andrea Rivers



Metal ring (left) and mixed media necklace by Meredith Arnold (right)



Leaf cane covered beads by Kim Day (left) and real lapis lazuli necklaces from Nan Robkin (right)



Dungeon and Dragons inspired art dolls: magician (left) and rouge (right) by Ria Mendoza Hoyt



Pin by Dan Cormier from Nan Robkin (left) and sculpted mouse by Andrea Rivers (right)

---

But wait, there's more!  
**Announcements**





## NWPCG Clay Camp Registration is OPEN!

Date: May 18-22, 2017

Venue: Camp Huston (beside Wallace Falls State Park) Gold Bar, WA

Cost: varied

Great news everyone! Registration to the much-awaited annual Northwest Polymer Clay Guild Clay Camp is now open! The Camp will be held from May 18-22 at Camp Huston Gold Bar, WA. Participants can look forward to the Camp's star attraction: the 24-hour workroom in tandem with delicious meals prepared by Camp Huston's stellar staff. The area is a mecca of inspiration: surrounded by nature with gorgeous trails to explore when you need a break. And of course, there is a wonderful selection of classes available taught by experienced polymer clay instructors! So don't think twice about it, register now!

[Register to Clay Camp](#)

[Read the Camp Guide](#)

[Visit the NWPCG website!](#)



Newsletter Editor and Designer: Ria Mendoza Hoyt | [newsletter@nwpcg.org](mailto:newsletter@nwpcg.org)

Photos taken during NWPCG events may be posted on the NWPCG website, newsletter, social media and other promotional materials

**Copyright © \*2016 Northwest Polymer Clay Guild, All rights reserved.**

You are receiving this newsletter because you are a NWPCG member or NWPCG Friend.

**The Northwest Polymer Clay Guild is a 501(c)(3) non-profit organization  
EIN# 91-1713162**

Our mailing address is:  
Northwest Polymer Clay Guild (NWPCG)  
P.O. Box 904  
Lynnwood, WA 98046

[Add us to your address book](#)

NWPCG Raven logo, © Meredith Arnold 1995 and Ravensdale 2003 logo, © Meredith Arnold, 2002  
Any reproduction in whole or in part of copyrighted logos is strictly prohibited without the prior written  
permission of Meredith Arnold.

You are receiving this email because you are a member of NWPCG or one of NWPCG's friends.

We'd hate to see you go but if you want to change how you receive these emails, you can

[UPDATE YOUR PROFILE \(click here\)](#)

or [unsubscribe from this list](#).

