

---

# NWPCG Round Ornaments, Holiday Party & More

From: Northwest Polymer Clay Guild Newsletter <newsletter@nwpcg.org>

To: Maria Jam <mariajambrown@yahoo.com>

---

Volume 24 | Issue 12 | December 2017

[View this email in your browser](#)



Northwest Polymer Clay Guild

# Clay Play



## **Guild Highlights**

### **Covering Round Ornaments**

by Maria Brown

## **Contents**

From top to bottom:

November's 'Extended' Round Robin was a refresher course in covering glass ball ornaments with canes and sheets of polymer clay. We started with creating a 'medallion' on the bottom of a glass ball by cutting and placing cane slices in a pattern.

Then we placed our cane slices up the sides of the ornament and used a smoothing tool to blend them together. Some artists were creative in using the leftover cane corners to make additional designs.



*Maria's globe-covering template, cut-out*

Next we moved onto my template technique for getting the smoothest, quickest layer of base clay on a glass sphere. Paper templates in several sizes were provided to fit all the ornaments. A big thanks to Cathy Gilbert for bringing glass ornaments to share.



*Another option to wrap polymer clay sheets on the ornament is to use Terri's clever combo of techniques.*

- **Guild Highlights:**
  - Covering Round Ornaments
- Show & Tell
- Thank you Liz & Susan!
- Programs
  - December: Holiday Party
  - January: Clay Social
- President's Message
- Tool Time!
- Announcements

---

### **NWPCG Holiday Party**

Dec 6 | 6:30 p.m. | [Artworks](#)  
*Don't miss this party! We're going to have fun with non-raffle raffles, brown bag exchanges and tons of food! Read Kim's article below for details.*

---

### **NWPCG Clay Day**

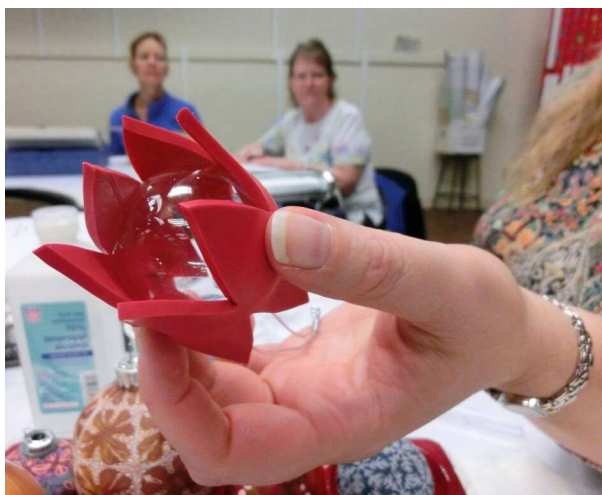
Dec 9 | 9:00 a.m. - 5:00 p.m.  
| [Third Place Commons](#)  
*Come and clay with friends. Look for us at the food court.*

---

### **NWPCG Clay Social**

Jan 3 | 6:30 p.m. | [Artworks](#)  
*Got all your New Year resolution sorted out? Bring it to our first meeting of the year and let's have fun finishing old projects or starting new ones.*

---



After carefully cutting the polymer clay after the template, we wrapped it around the glass globe.



Then we smoothed the clay around the glass.

### **Connect on Pinterest**

Look for our [Pinterest account](#) and share ideas and inspirations with us. Check our boards for [holiday project inspirations](#).

---

### **Amazon Smile**

We are on [Amazon Smile](#). Simply choose the [Northwest Polymer Clay Guild](#) as the recipient and [with every eligible purchase](#), [Amazon](#) will donate 0.5% to our Guild.

---

### **Show your works**

We would love to showcase your works, finished or in progress in our [Instagram account](#). [Email photos with caption \(just give a brief description for the photo\) to Ria.](#)

---

### **Contact our Board Members**

If you need to contact any of our Board Members, the full list of emails is [here](#).

---

### **Brainstorming**

Are there particular topics you want covered during our programs? Do you want to teach or demonstrate a technique? [Email Cathy, our](#)

*VP of Programs and let her know what you have in mind.*

---

*Photos by Maria Brown, Kim Day and Meredith Arnold*



And as promised, Maria brought several fancy-shmancy cardboard 'Baking Tubes' for everyone to cure their creations. Notice the notches cut out of the top so the support stick doesn't roll off the tube.



Maria Brown shows the bottom of a finished ornament. Note how the 'medallion' was created with portions of the cane slices and how she worked her way up the sides.



Cathy Gilbert's polymer clay covered ornament ready to be decorated



Grace Seto's finished ornament



Terri Standley's finished ornament



*Cathy Gilbert's cane-covered ornament in progress*



Kim Day's finished ornament

---

## Show & Tell



Acorns by Katie Way brought by Meredith Arnold



Bracelet by Randee Ketzal purchased by Meredith Arnold



Bacon & Eggs by Randee Ketzal bought by Meredith Arnold



Vase by Kate Fahley



Judy Kuskin earrings brought by Nan Robkin



Judy Kuskin necklace brought by Nan Robkin



Cameo by Kate Fahley



Earrings by Kate Fahley



Necklace by Kate Fahley



Pendant by Cynthia Toops brought by Nan Robkin



Bracelet by Marie Segal brought by Nan Robkin

Meredith Arnold's name tag from the retreat made by Mari O'Dell



Clown Ring by Leslie Blackford brought by Meredith Arnold



Shawl pin by Terri Standley



Polymer clay covered pens from a previous swap brought by Charlie Nagel



Necklace by Carol Hayes





Shawl pins by Terri Standley



Shawl pins by Terri Standley



Beach cane by Kim Day



Extruder cane by Kim Day



Leaves by Charlie Nagel

Meredith Arnold's collection from a totem trade in a retreat she attended in August:



White Raven by Joan Tayler



Circle Totem by Katie Way



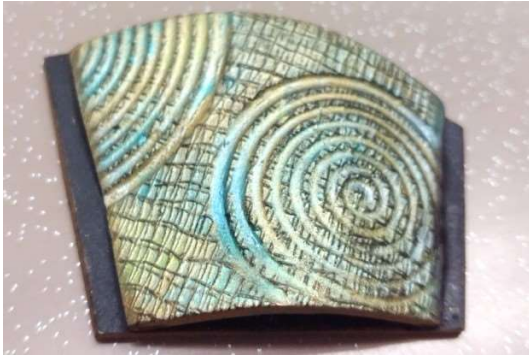
Circle Totem by Julie Picarello (front and back)



Eclipse Pin by Wendy Wallin Malinow



Molded Totem by Marie O'Dell



Helen Breil



Color Knot by Carol Blackburn



Molded Totem by Nan Roche



Moose Totem by Alice Stropel



Eclipse Totem, Sun side by Wendy Wallin Malinow



Eclipse Totem, Moon side by Wendy Wallin Malinow



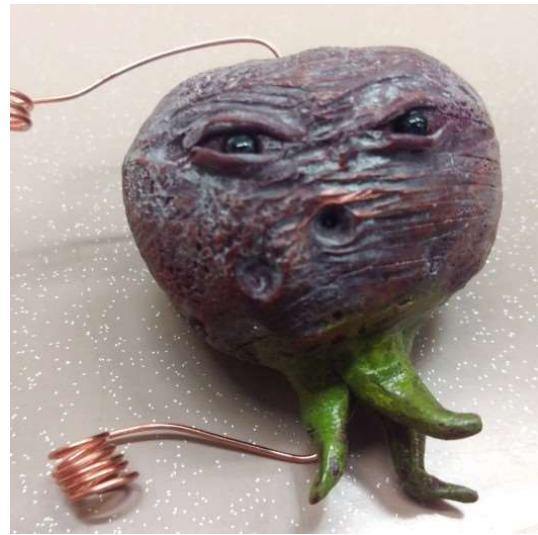
Maureen Carlson



Syndee Holt



Hanging Art by Katie Way



Mad Beet Totem by Wendy Wallin Malinow



Totem by Petra Nemravka



Flower by Julie Eakes to support Into the Forest Polymer Clay Exhibit



Eclipse by Cynthia Tineapple



Bird Totem by Laurel Swetnam



Sand Dollar Totem by Barb Harper



Meisha Barbee



Tejae Floyd

Snake by Leslie Blackford



Randee Ketzell



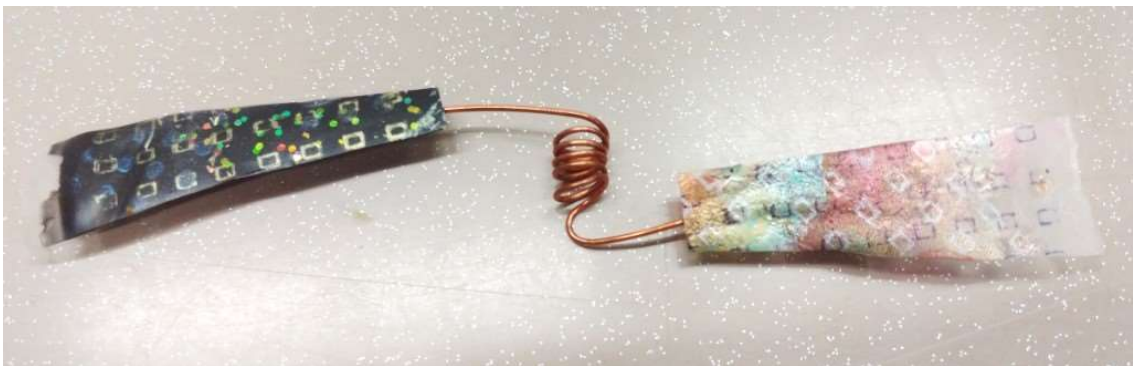
Bird by Rebecca Watkins



Blue Bird by Julie Eakes



Carol Simmons



Totem by Meredith Arnold

# A Huge Round of Applause

by Kim Day



With the departure of two of our beloved Board Members (no, they didn't die, just busy in real life!) I wanted to take this time to thank them for all they've done for the Guild.

Liz, thanks for your passion. You kept coming up with ideas for how to tell people about the Guild. You put a lot of effort into the Meetup group too. Thanks for the time, the laughter, the awesome jewelry lessons and the great job writing agendas for board meetings!

Susan, as a new member of the Guild, was like "How can I help?" Always looking to contribute and went above and beyond her duties, driving all the way to Ellensburg for the Guild. We appreciate you and all the extras you try to and do (Facebook play days, embroidered tote bags and others).

Ladies, you will both be missed as Board Members. Keep claying and keep coming when you can to the meetings! Your presence is appreciated and the absence noted. But we understand that life can be crazy, so do what you need to do for you.

Anyways, *hasta la vista*, baby.



# Programs

*December 2017*

## **Holiday Party**

By Kim Day | December 6 | 6:30 p.m. | [Artworks](#)



It's (almost) that time of year again! Since we're coming up on my favorite meeting of the year, I thought I'd throw a few reminders out there for old timers, and a few info bites for newer members. For the December meeting, we will be having our annual Holiday Party! Bring a potluck dish of your choice (if able, don't let not being able to bring a dish stop you from coming). I'll bring my usual toffee, and you'll all remember why you keep me around. We've had people bring bread, chips and dip, soup, curry, cookies, brownies, and meatballs. Not that food is everything but... we have some amazing cooks in the Guild!

Other activities include the optional non-raffle raffle, and the brown bag exchange. Feel free to bring donations (clay supplies, handmade things of all crafting varieties, etc) for the non-raffle. Tickets are \$1 each and are divided by entry. All proceeds go to support the Guild.

For the optional brown bag exchange, remember to bring something you would be happy receiving. In an unmarked brown (usually lunch size bag, provided at the meeting), put in something – clay, jewelry supplies, handmade ornaments, chocolate, texture sheets and stamps have all been popular items. Those that bring a brown bag (one per person limit) take turns either opening a new bag from the table or stealing (gasp! do this, it's fun and guarantees the item finds a good home) an already opened item. Once an item has been stolen, it is no

longer available to steal.

And lastly, we'll be doing a drawing. Remember those index cards you filled out during the year for show and tell? They each become an entry in the drawing for a nice JoAnns gift certificate. Anyways, hope to see you there!

---

*January 2018*

## **New Year, New Social!**

By Cathy Gilbert | January 3 | 6:30 p.m. | [Artworks](#)



Wow! Is it just me or did the year go by SO fast?! As the program VP for the Guild, I have quite a few ideas rattling around my (almost) empty noggin. BUT, the Guild doesn't exist just for me. I want to schedule programs and round robins that people in the Guild want to see. So email, text, fb message, snail mail or corner me at a meetings and let me know if there's something you'd like to learn, demonstrate or talk about. I really want to give you peeps what you want (no pun intended, Meredith!) and have a fun, educational, productive year for everyone.

Thanks so much for all the support everyone has given me, you've made this year so much fun! Come on out to the January meeting for a Clay Social. It's a time for new beginnings and old friendships. A time to enjoy giftings from Christmas, try something different, finish up old projects, put a new gloss on something that didn't work quite right, or just drop by and enjoy everyone's company. See you in the new year!

Have a Program Idea? Contact Cathy, click the button below.



President's Message | [president@nwpcg.org](mailto:president@nwpcg.org)

## New President in the House!

Hello Clay Friends!

Much to the chagrin of my husband, I am now the president of the Guild through the end of next year. So now I get to publish my ramblings for your entertainment each month. I look forward to sharing my love of clay and my love of my clay buddies. Susan Locsin is unfortunately unable to continue her positions as Guild secretary and librarian. Right now we're seeking volunteers to fill those two positions.

For the library chair, the responsibilities include getting the treasurer to pay for Guild magazine subscriptions, choosing additional books for the Guild library based on the budget allocated for such, and checking out books to members during clay meetings. This is a non-voting position but you would be welcome to attend board meetings (as are all members of the Guild).

For the secretary position, the responsibilities include taking minutes at the Board meetings and general meetings (eight total meetings a year with general meetings happening during the monthly clay meetings. We are considering making board meetings online via Skype or Google Hangout), publishing those minutes to our Yahoo Group, and voting on things the board votes on. With the possible new changes, we would consider a remote/non-local person for this as well (we can have someone else take notes for the general meetings).

Happy holidays or midwinter's greetings! If you're like me and made yourself a crazy list of all the clay presents you want to make by December 25th, I encourage you to block out some time each weekend – and I encourage myself to listen to that stellar advice! For once, I am actually prepared with specific ideas of what I want to make. Now to sit down and start... :)

My favorite meeting of the year is upon us! I hope to see you all for the holiday party/December meeting. As written in our previous newsletter (also echoed above), there will be a delicious potluck, optional brown bag gift exchange and optional non-raffle raffle (which you are welcome to donate items to). Email me if you have any questions at [polymerclay@gmail.com](mailto:polymerclay@gmail.com) (love my email address).

*Kim Day*

## ***Tool Time!***

By Meredith Arnold



These tools have been tested by polymer artists and are proven to be very useful. Who knew that grass mat bottle dryers for baby bottles would be the perfect tool holders? Look on Amazon for "Boon Grass Mat Bottle Dryers". Notice in the photo how small handled tools are captured by a plastic cup with it's bottom cut out. There is even a travel version you can find online too.

---



Frustrated trying to cut an even noodle or rectangle shape from clay?  
Try this [Dual Flex Cutter Set](#) you can buy online.

---

## Announcements



### *Dichroic Polymer Clay Classes*

Meredith Arnold is holding a Dichroic Polymer Clay Class at the Colors of the Stone Gem & Bead Show. Students will work with air dry polymer clay and learn how to create dichroic-like effects and textures. [For more information, click here.](#)

When: January 29, 4:30-7:30 p.m.

Where: Booth 318, Casino Del Sol, 5655 West Valencia Rd Tucson, AZ

***Fun and Effective Marketing Techniques***



Meredith Arnold will teach super effective marketing strategies that will let people know about your work and free up your time so you can focus on what you love doing. [For more information and get details of Meredith's other classes at the JOGS Show, click here.](#)

When: February 2, 10:30am - 2:00 p.m.

Where: JOGS Show Tuscson Expo Center, also streaming live

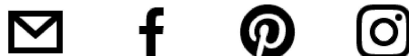


### *Cogworks in Edmonds*

The Cogworks is a new maker space in Edmonds! A maker space is a place open to the community that has tools and equipment that you can use for a small fee. The Cogworks has industrial sewing machines, jewelry making tools, a 3D printer and more. Did you know that a 3D printer can “print” custom shaped cookie cutters for use with clay? [Click here for more information.](#)

---

NWPCG website



Newsletter Editor and Designer: Ria Mendoza Hoyt | [newsletter@nwpcg.org](mailto:newsletter@nwpcg.org)

Photos taken during NWPCG events may be posted on the NWPCG website, newsletter, social media and other promotional materials

**Copyright © \*2017 Northwest Polymer Clay Guild, All rights reserved.**

You are receiving this newsletter because you are a NWPCG member or NWPCG Friend.

**The Northwest Polymer Clay Guild is a 501(c)(3) non-profit organization  
EIN# 91-1713162**

Our mailing address is:  
Northwest Polymer Clay Guild (NWPCG)  
P.O. Box 904  
Lynnwood, WA 98046

[Add us to your address book](#)

NWPCG Raven logo, © Meredith Arnold 1995 and Ravensdale 2003 logo, © Meredith Arnold, 2002  
Any reproduction in whole or in part of copyrighted logos is strictly prohibited without the prior written  
permission of Meredith Arnold.

You are receiving this email because you are a member of NWPCG or one of NWPCG's friends.

We'd hate to see you go but if you want to change how you receive these emails, you can

[UPDATE YOUR PROFILE \(click here\)](#)

or [unsubscribe from this list](#).

