

---

# See you on March 7th!

From: Northwest Polymer Clay Guild (NWPCG) <newsletter@nwpcg.org>

To: Maria Jam <mariajambrown@yahoo.com>

---

Volume 25 | Issue 03 | March 2018

[View this email in your browser](#)



Northwest Polymer Clay Guild  
**Clay Play**



## Guild Highlights

### Hello Bargello!

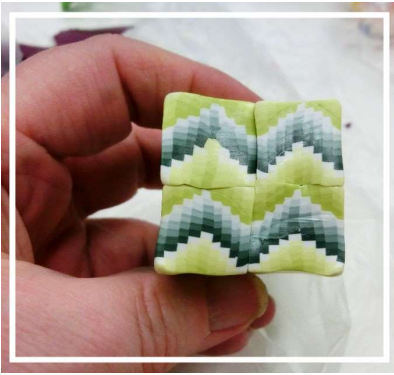
Text and photos by Cathy Gilbert

I'm always happy when I can talk Kim into teaching, so the February program was a real treat! Kim presented a program on the Bargello cane, with another bonus technique at the end. She started out with some great handouts of

## Contents

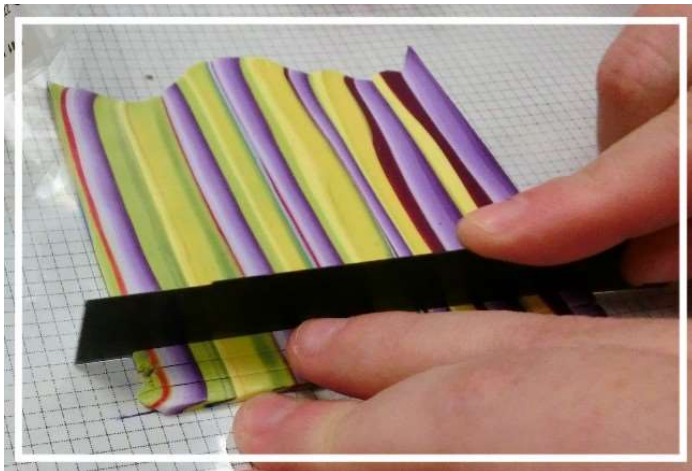
From top to bottom:

- Guild Highlights:  
Hello Bargello!
- Show & Tell
- Feature: Tribute to  
Tory Hughes
- Program:



bargello patterns and a brief explanation of how to use them.

On to the clay! Kim set everyone to making a Skinner blend. Oh my, the colors and blends everyone put out! They were beautiful! Then came the turning the blend into a shaded block. The secret to the bargello cane is in the slicing and reassembling which was clearly and completely explained. I'm glad I got pics of everyone's efforts. We moved on to final assembly and reduction. I'm happy with how mine turned out!



- March - Mokume Gane & Metal Foil Techniques
- April - Skinner Blends

- Feature: NWPCG covered letters
- Donate Your Work for a Furry Cause
- President's Message
- New Tools
- Announcements

---

### **NWPCG Round Robin**

March 7 | 6:30 p.m.

| [Artworks](#)

*Join us for two exciting programs: Mokume Gane by Cathy Gilbert and Metal Foil Techniques by Maria Brown. Scroll down to Programs to see full details.*

---

### **NWPCG Program**

April 4 | 6:30 p.m.

| [Artworks](#)

*Cathy Gilbert will show us different Skinner Blend techniques that can be used for so many projects! Scroll down to Programs to see full details.*

---

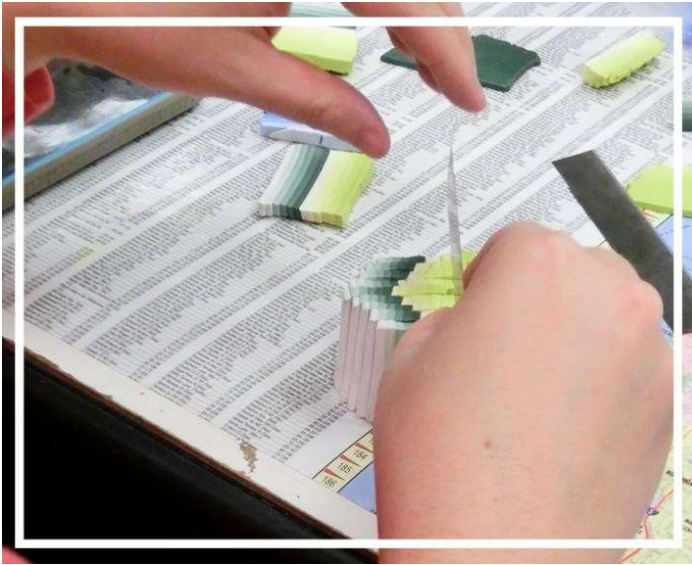
### **NWPCG Clay Day**

March 24 & April 28 |

10:00 - 5:00 | [Enumclaw](#)

*If you love peace and quiet, and space to spread out, join us on our Enumclaw Clay Days. The venue is just perfect for claying!*

---



### **Connect on Pinterest**

Look for our [Pinterest](#) account and share ideas and inspirations with us. Check our boards for project inspirations.

---

### **Spread the Word**

Help the people in our communities get to know our [Guild](#). Help us spread the word, share our social media accounts ([FB](#), [Instagram](#), [Pinterest](#)) in your own social media accounts

---

### **Amazon Smile**

We are on [Amazon Smile](#). Simply choose the Northwest Polymer Clay Guild as the recipient and with every eligible purchase, [Amazon](#) will donate 0.5% to our Guild.

---

### **Show your works**

We would love to showcase your works, finished or in progress in our [Instagram](#) account. [Email photos with caption \(just give a brief description for the photo\) to Ria.](#)

---

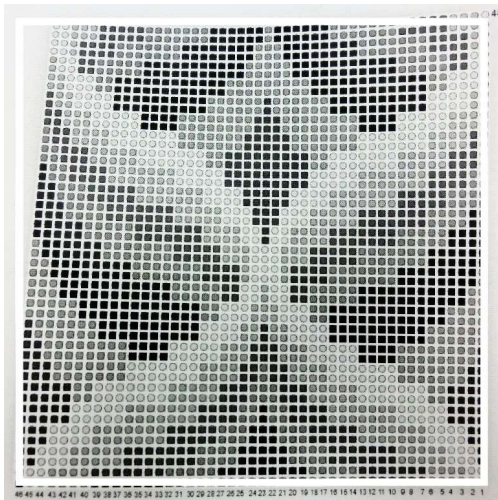
### **Contact our Board Members**

If you need to contact any of our Board Members, the full list of emails is [here](#). The Board will be doing an annual planning soon. If you want to contribute your ideas for programs, projects and other activities, please email any Board member.



Bonus bargello – Kim showed us how to make a marbled, striped sheet of clay and then slice it up and reassemble it into a lovely bargello sheet.

*Show & Tell photos by  
Maria Brown and Cathy  
Gilbert*



She even gave everyone a sheet of graph paper to make the slicing part easier. Thanks so much, Kim! I really enjoyed the program and I'll be happily putting the cane into use!

---

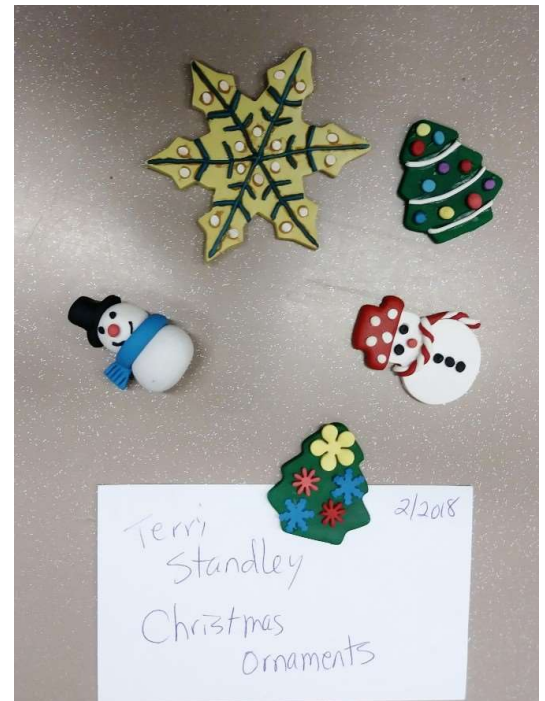
## Show & Tell



(Left) Box by Carol Hayes | (Right) Earrings by Jane Nickell



Works by Jane Nickell made during a beginner class with Carol Hayes



(Left) Mixed Media Doll by Nan Robkin Polymer | (Right) Christmas Ornaments by Terri Standley

---

# Saying Goodbye to *Tory Hughes*

by Meredith Arnold



I am extremely sad to say that Tory Hughes died Sunday, Feb. 18. Tory Hughes created the imitative techniques so well used in polymer art today. She presented these techniques in a series of videos while actually living in the producer's living room. There are other stories of Tory living with people across the country during her "nomadic" period but eventually she settled into a lovely Adobe rambler in Albuquerque, NM that she named Art Ranch. Stories of Trebizond, their ancient artifacts and nomadic adventures began to emerge from Art Ranch as well as new workshops.

Tory's generosity extended well beyond sharing her creative innovation with the world. She studied hypnotherapy and opened an office in Santa Fe. I was a recipient of a new process she learned through her studies that changed my life while staying at Art Ranch one year. She loved to help others understand their intrinsic value which moved her into art/life coaching adding to her inspiration for others.





Tory then moved to Santa Fe and later found a space that she transformed into the Tory Hughes Studio and Gallery, which has been her base of operations the last few years.



In Oct. she taught a workshop in Australia and at the end of January 2018 she taught her last workshop in her studio. She was a woman always in motion but time and being present for others was another way she manifested her generosity.

Tory Hughes was brilliant, loving, artistic, eccentrically herself, authentic and open hearted. She left us not only her art and a legacy of innovative techniques but her incredible inspiration for us all. She left the world a much richer place but really she left us much too soon.

## Programs

*March 2018 Round Robin*

**Mokume Gane**



**Cathy Gilbert** will teach us how to make Mokume Gane, a polymer clay technique that's nearly indispensable. You can easily add some sophistication and/or bling to this versatile technique using metal foils. If you want to clay along, bring:

- Two to three 1/2 blocks of conditioned clay in colors of your choice,
- One block of conditioned translucent clay,
- Metal foils, if you have them (I probably have enough for all!),
- Pasta Machine,
- Roller,
- Nice sharp blade,
- Work surface.

*March 2018 Round Robin*

## Metal Foil Techniques

By Maria Brown | March 7 | 6:30 p.m. | [Artworks](#)





**Maria Brown** will present a few metal foil fracture techniques and an 'inlaid foil' technique that will spark your creativity. You can use these techniques in a variety of projects from beads to veneer to faux dichroic glass... everything! If you want to clay along, bring:

- Two to six ounces of black clay or any other colors you like,
  - Two ounces of translucent clay,
  - A few of your favorite rubber stamps and a water spray bottle,
  - The usual clay tools, including pasta machine and work surface,
  - Alcohol inks, mica powders, translucent liquid clay, and a heat gun (if you have them).
- 

*April 2018 Program*

## **Skinner Blends**

By Cathy Gilbert | April 4 | 6:30 p.m. | [Artworks](#)



Guess what? We get another Round Robin for April! I know it seems early but Clay Camp is coming up, and what could be nicer than having some new techniques to practice on when you get there? Come out for the April meeting and see the different ways you can put a Skinner blend together. It's one of those techniques that can be changed around and expanded on. For example, why use just two colors, when you have a rainbow of colored clay in your craft cupboard? We'll also learn ways to put the colors together and step outside the regular Skinner blend box!

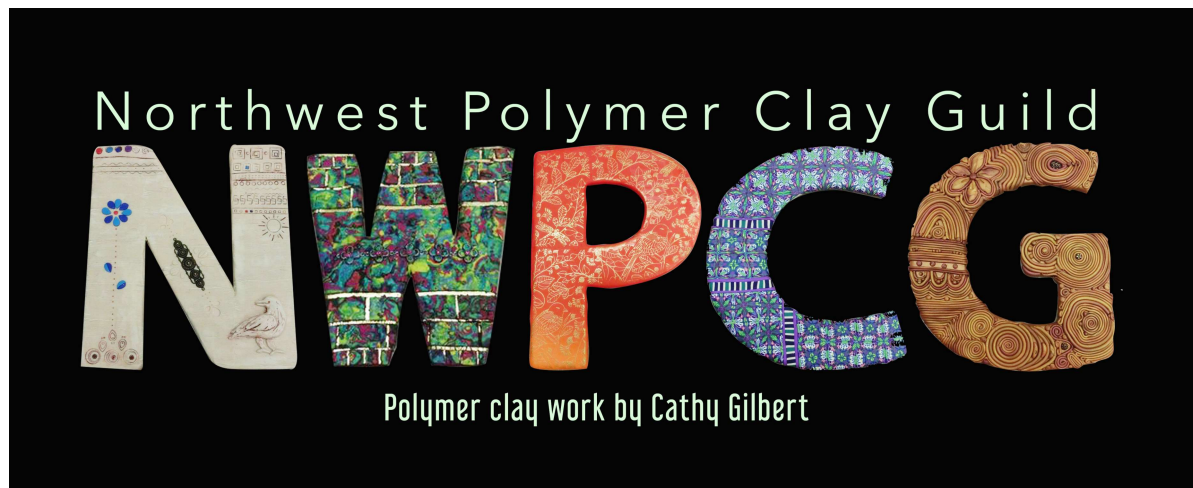


Have a program idea? Contact Cathy, click the button below.

[Email Cathy!](#)

## Feature: NWPCG Letters

Text and Photos by Cathy Gilbert



Ria was musing one day that someone should make letters for NWPCG and cover them with polymer clay. For some reason, it caught my fancy and I started thinking about something to do with the idea. First up, FINDING the letters. Trips to Joann's, Hobby Lobby, and finally, Michaels led to nice, pressed-board letters about eight inches tall. A goodly size for polymer play! Eventually, I settled on ideas for each letter and began crafting:

This letter was actually the last one I made. I had a concept of faux ivory and decided to do it for this letter because ivory is sometimes used in Native American art. Luckily, I taught this technique for a Guild round robin last year and had a nice sized ingot of ivory. I sliced it up and put it on the letter. Wow... that's a lot of space to decide what to do with! I dithered a bit and then just started "carving" with stamps, a linoleum cutter, a needle tool and other assorted sharp things. I also inserted a very little bit of faux turquoise, lapis and coral as accents. Finally, I really wanted to have the Raven logo represented somehow. My initial thought of scrimshaw was quickly discarded (not in my skillset, I'm afraid), and I settled on a small



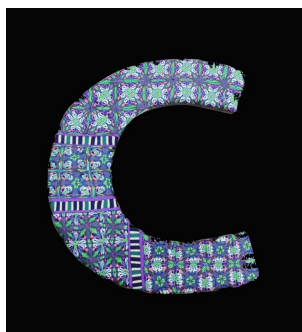
bas relief-type sculpture. The letter ended up with a couple of different styles to it. I did a quick wash with brown paint and wiped it away. The letter "N"!



I received quite a few rolled out sheets of clay from Cheryl Simmon's stash and I began assembling them into Mokume Gane blocks of various colors and sizes. I've been turning them into tiles for mosaics and made a couple of picture frames and boxes, so I thought I'd make a letter with them. W is just M turned upside down, so that seemed a likely choice for the "W." I was experimenting with texture at the time, so left the Mokume bumpy instead of smoothing it out. I also had some jewelry components that seemed made for this particular piece. The letter "W"!!



It took me a while to figure out what to do with this letter. I eventually decided I wanted a silk-screened piece, so "P" for paint seemed the right choice. I realized that I hadn't done a Skinner blend on any of the letters and that seemed a shame. The silk-screen technique turned out to be a great choice to combine with the Skinner blend. Most of the colors of the letters were turning out to be in my preferred palette, but I wanted to step out of my comfort zone a bit and work with colors I don't usually create with. So I went with the red/orange blend and gold paint. The letter "P"!



letter "C"!

The obvious choice was a letter covered with cane slices. I had a bit of a difficult time with this one. I knew what colors I wanted but I also wanted a bit of a lighter feel. When I made the initial cane, it looked so dark and not AT ALL what I wanted. I put it aside and went to work on a different letter. When I came back to it, I cut it up into four lengths and turned each square cane into a triangle cane. Each basic triangle cane was oriented in different ways and recombined into four square canes. I had some leftover cane color that I'd put together as a striped cane. I used the striped cane to set off the four canes on the letter. The



I actually did this letter first. I'm not overly fond of extruding but I wanted to blend the various metallic clays to get nice shadings of gold. I extruded them in a couple of sizes and then... wow, that's a lot of letter to cover! I didn't really have a plan. Finally, I just started laying down the clay. About half-way through I realized I might run out of clay ropes. So I smushed some left-over pieces into decorative elements that took up some space and left some small openings for glass beads to be inserted. I'm glad I started with this letter... it gave me confidence to finish up the rest. I think it's my favorite. The letter "G"!

There you go, NWPCG!



"Tuxes & Tails" is a Seattle Humane (SH) annual event where they auction off donations to raise awareness and funds to help our furry friends in need. This is a great chance for us to help out and at the same time spread the word about our Guild.

Donated items can take the form of jewelry, artworks, sculptures, certificates for made to order pieces and other items. If you want to donate, please bring it to our March 7th meeting. Ria Mendoza Hoyt will collect the items and bring it to Seattle Humane. If you can't bring it on March 7th, contact [Ria](#).

Donations to "Tux & Tails" must be in by March 15th to be included in the catalog but SH will be accepting donations till before the event on May 12th.

Email Ria



President's Message | [president@nwpcg.org](mailto:president@nwpcg.org)

## Spring, dare I say cleaning?

It's spring, and although I'm going to say a very, very bad word, I hope you'll all forgive me. Time to consider **cleaning** out your clay area! For me especially, if my clay area is too messy, it's hard to start a new project or even finish an old one. And... it's finally driving my husband crazy! He said it would be fine if I had just one clay area in the house but I have three or four. Here's another bad word – he's offered to help with **organizing**. Those two words just go against an artist's free spirit but unfortunately, seeing how much the mess has been a deterrent for myself, have become necessary evils.

The guild has fun events coming up. Meredith has received some very exciting clay camp proposals. For those seeking a clay project to work on, remember the camp swap theme is already available: artist trading cards. The size is the same as a baseball card - 2.5"x3.5" (64 mm × 89 mm). They can be the same or different, and can be multimedia but must include some element of clay or can be entirely clay. And as always, we welcome beads and/or keychain donations for the Fair giveaways.

We'll also be deciding on a space to host a free beginner's class, and then trying to get word out about it. Do you want a bigger project to work on? Start brainstorming something to enter in one of the Fairs! Sculpture, jewelry, home decor, ornaments and many other categories are available. Challenge yourself. My goal this year is to make some dragons in non-cane format. :) I didn't give myself a deadline, so as long as I make one by Dec 31st, I have achieved something.

Anyways, cherish your family, cherish your friends, take some vitamin D (or don't, I'm not a doctor), and I'll look forward to seeing you guys soon.

Love much,

**Kim Day**

New Tools

By Meredith Arnold



Cool, new carving tools made for ceramic clay but will work on polymer clay, too! Find them [here](#).

## Announcements



### ***Art Spa Every Friday***

Art Spa Open Studio is most every Friday, 12 pm to 4:00 p.m. at ArtWorks. Bring a current project to work on. We have ovens, pasta machines, hot and cold running water, tea, a full kitchen, bring lunch or snacks and settle in for the day for just \$5 per person. We can even provide a little technical support if needed! Check the [ArtWorks online calendar](#) for dates.

---

NWPCG website



Newsletter Editor and Designer: Ria Mendoza Hoyt | [newsletter@nwpcg.org](mailto:newsletter@nwpcg.org).

Photos taken during NWPCG events may be posted on the NWPCG website, newsletter, social media and other promotional materials

**Copyright © \*2017 Northwest Polymer Clay Guild, All rights reserved.**

You are receiving this newsletter because you are an NWPCG member, Friend or you subscribed to our emailers.

**The Northwest Polymer Clay Guild is a 501(c)(3) non-profit organization  
EIN# 91-1713162**

Our mailing address is:  
Northwest Polymer Clay Guild (NWPCG)  
P.O. Box 904  
Lynnwood, WA 98046

[Add us to your address book](#)

NWPCG Raven logo, © Meredith Arnold 1995 and Ravensdale 2003 logo, © Meredith Arnold, 2002  
Any reproduction in whole or in part of copyrighted logos is strictly prohibited without the prior written permission of Meredith Arnold.

You are receiving this email because you are a member of NWPCG or one of NWPCG's friends.

We'd hate to see you go but if you want to change how you receive these emails, you can

[UPDATE YOUR PROFILE \(click here\)](#)

or [unsubscribe from this list](#).

