
See you on April 4th!

From: Northwest Polymer Clay Guild Newsletter <newsletter@nwpcg.org>

To: Maria Jam <mariajambrown@yahoo.com>

Volume 25 | Issue 04 | April 2018

[View this email in your browser](#)



Northwest Polymer Clay Guild
Clay Play



Guild Highlights

Colors and Shine

Text and photos by Ria Mendoza Hoyt

Contents

From top to bottom:

What is that weird photo above you may ask? If you were not at the last meeting, then you would not have seen this glorious collection of cellophane paper that Maria Brown brought for us. What is it for? Dichroic beads.

I just love how our members, to show us their techniques, dive deeply and totally into exploring an already known way of doing things. And in the process of doing so, goes a thousand mile more to show us a better way to do it. It's creativity at its best! Maria wanted to show us how to make dichroic beads and followed available tutorials on the web but found it lacking. So she experimented and discovered that using cellophane – those clear plastic sheets used for gift wrapping or fairy wings – actually help create very realistic color changes when light hits the bead, and voila! Dichroic polymer clay beads.

I will let the pictures do the talking, because both of our Round Robin teachers prepared a great deal to show us two techniques: Metal Foil & Mokune Gane. Before you scroll down though, let me apologize for the photos, they do not do justice to the polymer clay tiles our teachers showed us, especially the dichroic effect which Maria perfected.

Metal Foil Techniques with Maria Brown:

1. Black clay stamped with mica powder applied with fingertip.



2. Crackedled gold leaf over magenta clay, topped

- Guild Highlights:
 - Colors and Shine
- Show & Tell
- Feature: Happy Memories with Terri Standley
- Memorial Service for Terri
- Program:
 - April - Skinner & Other Blends
 - May - Symphony of Spirals
- President's Message
- Feature: A Week of Art & Soul
- Announcements

NWPCG Round Robin

April 4 | 6:30 p.m.

| [Artworks](#)

Kim Day will show us different Skinner and other blending techniques that can be used for so many projects! Scroll down to Programs to see full details.

NWPCG Clay Day

April 14 | 9:00 - 5:00 |

[Third Place Commons](#)

Join us for a day of claying at Third Place Commons, Town Center at Lake Forest Park. We'll be in a long table by the stage.

NWPCG Program

May 3 | 6:30 p.m.

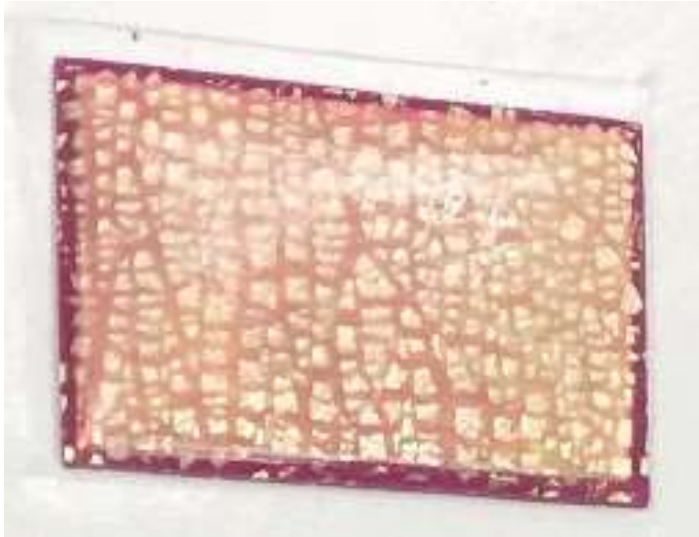
| [Artworks](#)

Cathy Gilbert will revisit another classic technique and help us use it for more intricate and complicated

with clear liquid clay.



3. Dichroic cellophane sheet topped with liquid clay.



4. Metal Foil mixed into blue clay. Cut out cracked foil stars rolled flat into blue.

projects. She calls this the Symphony of Spirals.

Register for Clay Camp

May 17-21

Registration for Clay Camp 2018 is now open. All you have to do is hop on over to our website. This year's class details are also available. Help us spread the word by posting about Clay Camp in your social media. Watch out for the Clay Camp emailer – we'll send out a guide with all the details you need to know. [Click here to Register](#)

Connect on Pinterest

Look for our [Pinterest](#) account and share ideas and inspirations with us. Check our boards for project inspirations.

Spread the Word

Help the people in our communities get to know our [Guild](#). Help us spread the word, share our social media accounts ([FB](#), [Instagram](#), [Pinterest](#)) in your own social media accounts

Amazon Smile

We are on [Amazon Smile](#). Simply choose the Northwest Polymer Clay Guild as the recipient and with every eligible purchase, [Amazon](#) will donate 0.5% to our Guild.



5. Cracked metal foil over clay, stamped, then highlighted with mica. Half of it is covered with liquid polymer clay.



6. White clay stamped with metal foil, alcohol inks and liquid polymer clay on top.



Show your works

We would love to showcase your works, finished or in progress in our [Instagram account](#). [Email photos with caption \(just give a brief description for the photo\) to Ria.](#)

Contact our Board Members

If you need to contact any of our Board Members, the full list of emails is [here](#). The Board will be doing an annual planning soon. If you want to contribute your ideas for programs, projects and other activities, please email any Board member.

Show & Tell photos by Ria M Hoyt

7. (Left) Translucent clay mixed with foil paper. Dichroic cellophane sheet on top half.

8. (Right) Translucent clay mixed with foil glitter. Dichroic cellophane sheet on top half.



9. Dichroic cellophane sheet over black clay and on the right a sample of an iridescent cellophane sheet.



Mokune Gane with Cathy Gilbert:

Next, Cathy Gilbert walked everybody through how to make a Mokune Gane by layering several sheets of solid colors with metal foil (of course!) and translucent polymer clay, and running it through the pasta machine. For a second set of sample, she did the reverse and opted to layer translucent sheets broken up with solid colors. For each set, she cut them in half and layered one on top of the other making it more bulky.



After much squishing, making sure no air bubbles were trapped inside, she created wells or holes randomly, and injecting those spaces with different colors to finally create the look she wanted. The two sets of colors she played with created very different effects:



Members clayed along. Terri Standley was fast and enthusiastic with her piece. She was very proud of the tool she used and wanted it shared – a deer antler shaped like a long, thin fang. She said it was very effective in poking holes through her Mokune Gane so she could insert them with a contrasting color.



Susan Locsin played with bright colors and different-shaped cutters for the holes creating an interesting effect.



Another fabulous learning night. I'm definitely looking forward to the next, so be sure to check out the Programs section and be ready for Skinner & Other Blends by Kim Day.

Show & Tell



(Left) Spirit tree doll by Nan Robkin | (Right) Beads made in a class with Jamie Allan by Nan Robkin



(Left) Frida brooch, a gift to Nan Robkin | (Right) Beaded Doll "Tory" by Meredith Arnold



(Left) Budha by Tory Hughes | (Right) Imitative beads by Meredith Arnold



Imitative beads by Meredith Arnold



Imitative beads by Meredith Arnold



Imitative beads by Meredith Arnold



(Left) Scarf by Carol Hayes Made for Meredith Arnold | (Right) Lanyard by Kim Mitchell



Earrings (left) and work by Katie Weibel for the Lisa Renner Class (right)



Work by Katie Weibel for the Lisa Renner Class

Happy Memories with *Terri Standley*

By Kim Day

As some know, and others may not yet, we lost someone very special this month. As we deal with the tragic deaths of Terri (Theresa) Standley and her husband Steve, I think it's important to share some memories of how she was in her life, not in her death.



Terri was a lovely, sunshiny, sparkly person who brought joy to those around her. I knew she would be excited each and every time I saw her, whether it was about learning a new technique at the round robins, or just to make some more buttons. She gladly donated her extremely limited time helping out the Guild as Treasurer, and with her leadership we had made monthly clay days in her Enumclaw church a regular Guild event. Terri (along with Betty) introduced us to our Fair demos, and shared her love of clay by teaching polymer at some of her weaver's retreats.

I'd encourage others to send in Terri memories to share for future newsletters as well. I know there will be an empty spot in my heart, and I'll keep looking up and expecting to see her at Clay Camp.



My memory I'd like to share is from Clay Camp last year. I taught an intro class, with Terri as one of my students. I brought my own oven for the

class but something wasn't quite right, and while a few people's darkened, Terri's intro burned. Undaunted, she began work right away on a second one. We checked the thermometer, the dial and everything looked fine, so she used the same oven. Another burned piece!!! Not only did Terri shrug it off, saying it gave her more practice perfecting the technique as she made a third one, but she found beauty in the burned pieces as well, and added bright cane slices to them to a beautiful effect. (Found out later the oven was set to toast instead of bake.) She knew how to take a negative and turn it into a positive and she helped many around her do the same. I'll miss you, my friend.



Memorial Service for Terri

Date: April 7th
Time: 10:00 a.m.

Location: Life Center in Tacoma

Programs

April 2018 Program

Skinner & Other Blends

By Kim Day | April 4 | 6:30 p.m. | [Artworks](#)



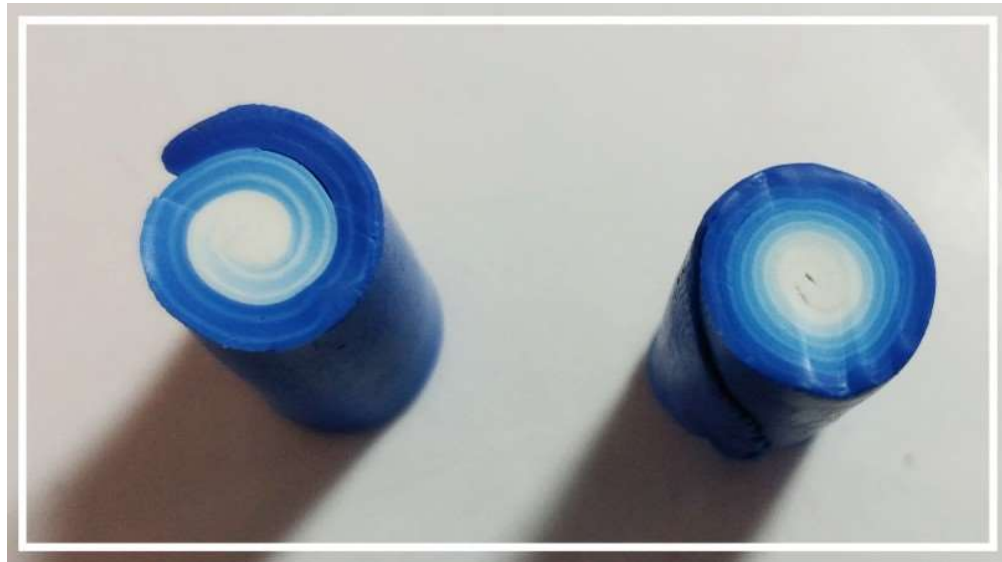
While it's technically a round robin, I had so much stuff I wanted to share about different blends I asked for both time slots. So please, bring some clay and clay along with me at our next meeting!

Bring:

- Pasta machine
- Clay blade
- Work surface
- Clay- we will be doing small blends that don't take much clay. Bring some white, and some bits of other colors, whatever opened blocks you have lying around

will probably do.

What will we cover? As much as I can fit in given the timeframe! Since we will probably be limited with time, I ask that everyone participating knows how to do a basic skinner blend (youtube or google). We will cover skinner blends with offset colors and saturated colors, how to make skinny blends, rainbow or other multicolored blends and pastel blends. We'll briefly touch on the color wheel for color choices. We'll do four different blending variations, including teardrop, stripes, strips and dots. If there is time, we'll talk about different ways to roll them up or make a plug. If there's extra extra time I can show how to use them! This is a technique near and dear to my heart and so versatile. Come play!



May 2018 Program

Symphony of Spirals

By Cathy Gilbert | May 2 | 6:30 p.m. | [Artworks](#)



Last year we took the bullseye cane and twisted it several different ways to come up with some fun variations. This time around, we're going to look at the deceptively simple spiral cane. It's amazing the different looks you can get just by varying the size and number of layers, as well as tweaking the layers in some interesting ways. I call this a Symphony of Spirals and I can't wait to see what people come up with.

Have a program idea? Contact Cathy, click the button below.

[Email Cathy!](#)



President's Message | president@nwpcg.org

Up and Running

After a small snafu with the website (thanks to Maria for going above and beyond to fix it, while simultaneously getting all the camp registration going!), we're back up and running again. As a volunteer run organization, putting on events like this every year do take quite a bit of behind the scenes action. Meredith kindly solicited the wonderful classes we'll be offering, and then scheduled them based on size and duration. Maria has been filling out all the categories for 123signup, and being tech support for registration. Ria has been doing great getting our name out there by donating two class spots to the humane society auction, and also through Facebook ads and our Facebook Guild site.

My food for thought for the month: try and find joy in the things you have, not in the things you do not. Celebrate your moments with friends and family and cherish the memories you build. Reach out to someone you've been meaning to for a while. Tell someone that you're thankful for their presence.

Thanks again for my clay friends, supporting each other through a rough time this month.

Love much,

Kim Day

A Week of Art & Soul

By Katie Weibel



Kim Torkington Mitchell and I took a week-long art class using polymer clay and other mixed media at Art and Soul in Portland last month. We stayed at The Sheraton for a whole week from February 11th-18th. For the first three days, I was immersed in classes taught by Laurie Mika working with polymer clay, paint, shadow boxes and all sorts of embellishments making mandalas, small hanging artifacts made from her assortment of molds and crowns to hang on the walls.



After that, we had an impromptu clay day. It was great, the hotel staff set up tables in a big open area that looked out into a courtyard. They also allowed me to set up my oven and an area to clean my silk screens. Anything we needed, the hotel staff arranged for us.



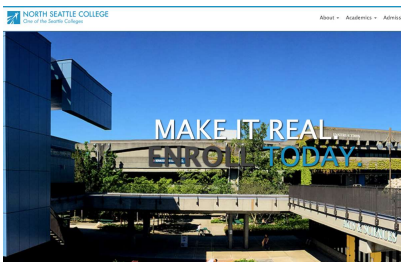
We spent the fifth day walking around downtown Portland. We even ate at the food trucks. They have a whole block of food trucks! On the sixth and seventh day of our visit, we took a couple of classes from Lisa Renner. Using Sculpey original clay, we made utensil/tool holders then birds the next day. Lisa showed us how to make the clay look antique, then we used alcohol ink and embellishments.



The last night we were there, they have what is called a vendor fair where you can buy art that the teachers have made and they also have a fabulous stamp vendor there too. They also set up a craft store that took up the entire lobby. It was there all week.

Registration is now open for Art and Soul for March 10-17th 2019! We are going back again if anyone wants to join us let me know.

Announcements

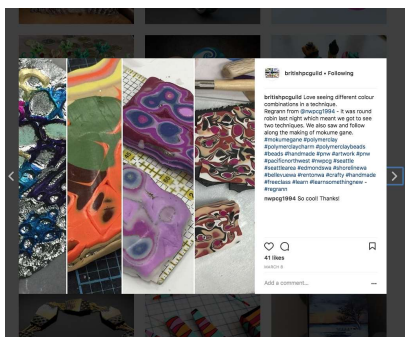


New Polymer Clay Classes

New programs will be offered Summer quarter at North Seattle Community College:

- Polymer Clay classes with Carol Hayes
- Different techniques in jewelry making with Meredith Arnold

Check out fellow Guilds



The British PC Guild showcases their guild wonderfully. They also repost polymer clay works from other IG accounts. They reposted our own IG post showing our member's Mokune Gane works on March 8th. [Check out their IG account here.](#)

Are you registered for Clay Camp yet?

May 17-21 | Register today!

[NWPCG website](#)



Newsletter Editor and Designer: Ria Mendoza Hoyt | newsletter@nwpcg.org

Photos taken during NWPCG events may be used for promotional materials

Copyright © *2018 Northwest Polymer Clay Guild, All rights reserved.

You are receiving this newsletter because you are an NWPCG member, Friend or you subscribed to our emailers.

The Northwest Polymer Clay Guild is a 501(c)(3) non-profit organization

EIN# 91-1713162 | Our mailing address is:

Northwest Polymer Clay Guild (NWPCG)

P.O. Box 904

Lynnwood, WA 98046

Add us to your address book

Any reproduction in whole or in part of copyrighted logos is strictly prohibited without the prior written permission of Meredith Arnold.

You are receiving this email because you are a member of NWPCG or one of NWPCG's friends.

We'd hate to see you go but if you want to change how you receive these emails, you can *UPDATE YOUR PROFILE* ([click here](#)) or unsubscribe from this list.

