

---

# Clay Camp is almost here!

From: Northwest Polymer Clay Guild Newsletter <newsletter@nwpcg.org>

To: Maria Jam <mariajambrown@yahoo.com>

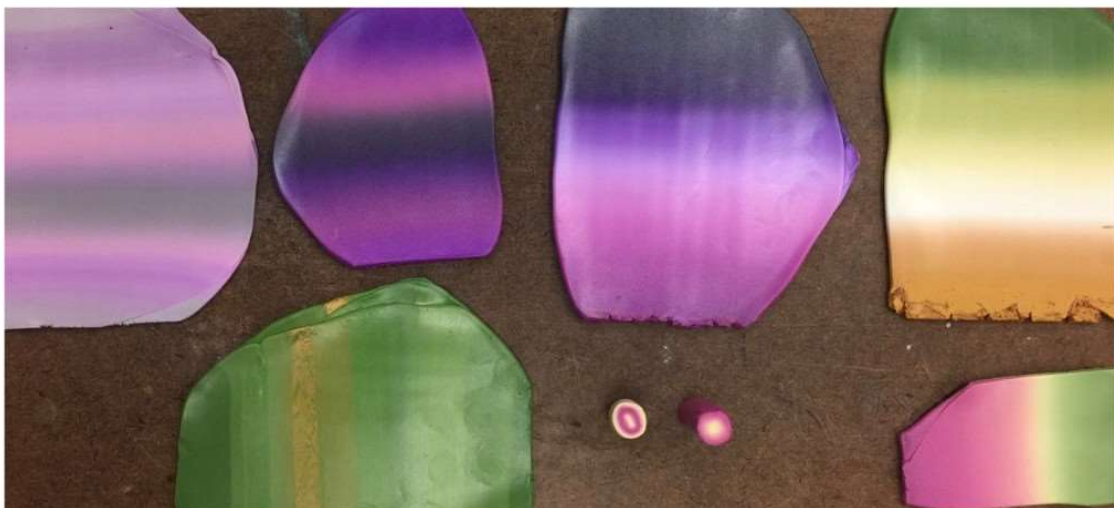
---

Volume 25 | Issue 05 | May 2018

[View this email in your browser](#)



Northwest Polymer Clay Guild  
**Clay Play**



## Guild **Highlights**

### **Rainbow of Colors**

Text by Kim Day, Photos by Ria Mendoza Hoyt

## **Contents**

From top to bottom:

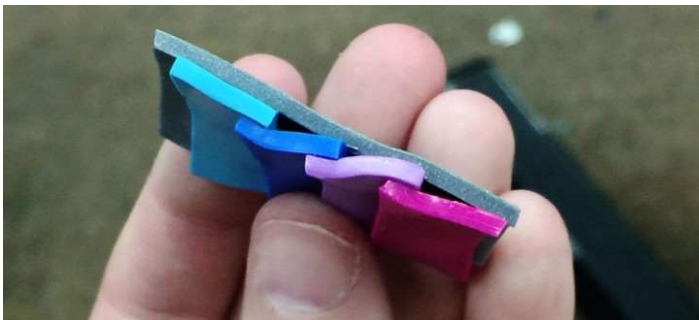
- Guild Highlights:
- Show & Tell



*Skinner blend used as the basis of a cane. This collection is a great example of the different stages of the cane-making process by Kim Day*

As usual, our meetings began with yummy treats, show and tell, and a few announcements. I then showed a bunch of skinner blends and other gradient blending techniques. We discussed color saturation and how to make a balanced blend using non-triangles.

We made skinner blends with teardrops instead of flat sheets. We made a blend using either white or translucent background with dots of color. I showed how to adjust a blend by adding color to an existing one, and how to use a strip of a blend with either translucent to extend the amount, or white to make a pastel version.



- Program:
  - May - Symphony of Spirals
  - June - Clay Social
- President's Message
- Announcements

### **NWPCG Round Robin**

May 2 | 6:30 p.m.

| [Artworks](#)

*Cathy Gilbert will revisit another classic technique and help us use it for more intricate and complicated projects. She calls this the Symphony of Spirals.*

### **NWPCG Clay Day**

June 9 | 9:00 - 5:00 | [Third Place Commons](#)

*Join us for a day of claying at Third Place Commons, Town Center at Lake Forest Park. We'll be in a long table by the stage.*

### **Clay Camp**

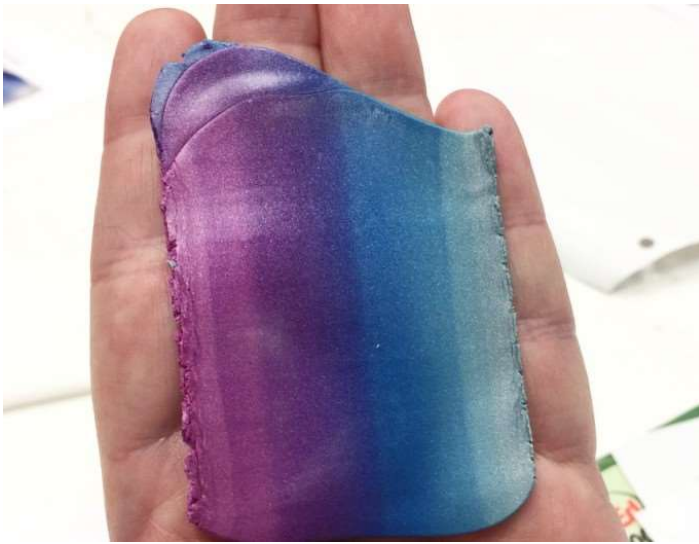
May 17-21

*The much-awaited clay Camp! Get your bags ready and head on over for camp or for your classes.*

*Deadline of registration is May 3rd. [Click here to Register](#)*

### **Connect on Pinterest**

*Look for our [Pinterest account](#) and share ideas and inspirations with us. Check our boards for project inspirations.*



And the last blend was with strips of overlapping clay, with or without a metallic clay background. One tip I gave was take a tiny amount of each color you'll be blending and mix by hand, to make sure you don't skinner blend two colors that make a yucky gray. I'll attach the handout for those that missed this colorful round robin. Hopefully those that attended learned something new!



*Rolling color blends make interesting canes*

### **Spread the Word**

*Help the people in our communities get to know our [Guild](#). Help us spread the word, share our social media accounts ([FB](#), [Instagram](#), [Pinterest](#)) in your own social media accounts*

---

### **Amazon Smile**

*We are on [Amazon Smile](#). Simply choose the Northwest Polymer Clay Guild as the recipient and [with every eligible purchase, Amazon will donate 0.5% to our Guild](#).*

---

### **Show your works**

*We would love to showcase your works, finished or in progress in our [Instagram account](#). [Email photos with caption \(just give a brief description for the photo\) to Ria](#).*

---

### **Contact our Board Members**

*If you need to contact any of our Board Members, the full list of emails is [here](#). The Board will be doing an annual planning soon. If you want to contribute your ideas for programs, projects and other activities, please email any Board member.*

---

*Show & Tell photos by Ria M Hoyt*

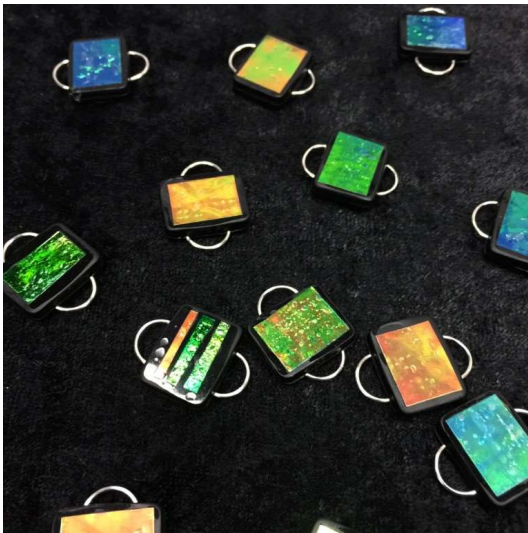


*Skinner blends applied to a pendant, sample by Kim Day*

[To download Kim's PDF Guide to blending, please click here.](#)

---

## Show & Tell

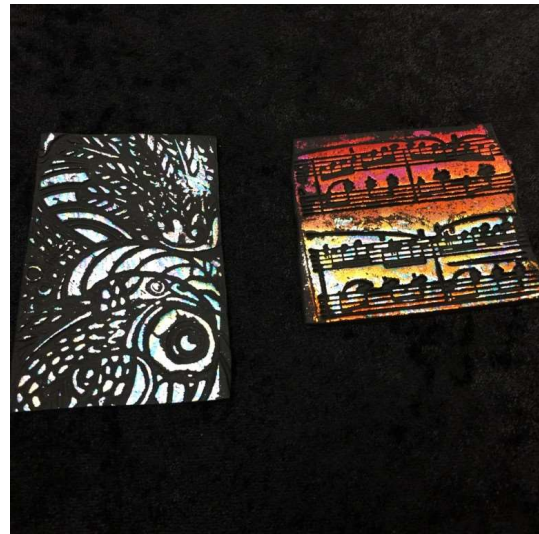
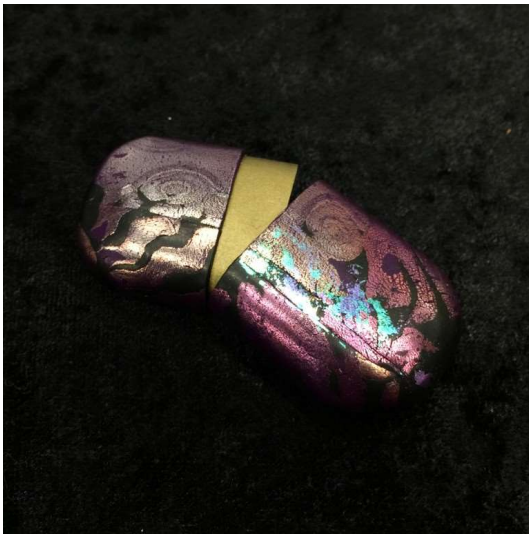


(Left) Bracelet links with faux dichroic glass effects by Maria Brown

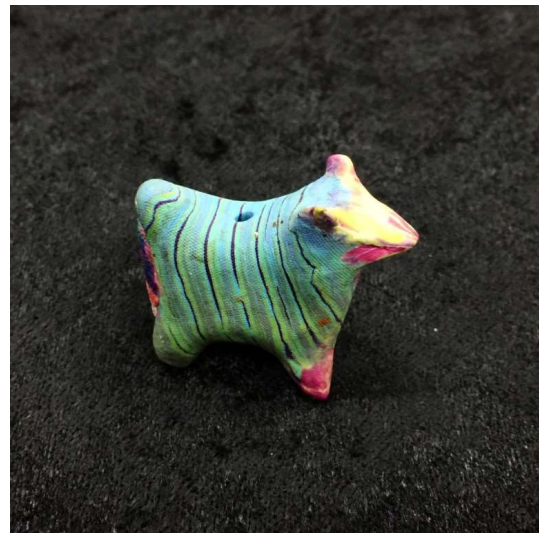
(Right) Dichroic effect by Meredith Arnold



Dichroic effects by Meredith Arnold



Dichroic effects by Meredith Arnold



Treasures by Nan Robkin

(Left) Bead by Carolyn Potter | (Right) Sculpture by Susan Hyde



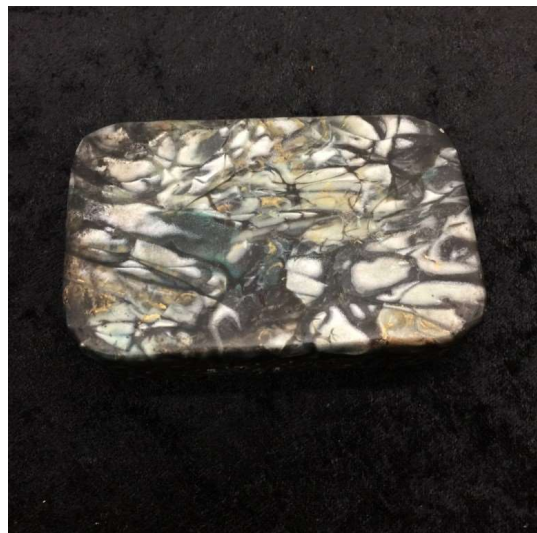
Treasures by Nan Robkin

(Left) Bead by Linda Goff | (Right) Snowman Seahawk by Helen Hughes



Treasures by Nan Robkin

(Left) Sparkly person by Meredith Arnold | (Right) Mona Lisa Bead by Kathy Amt



(Left) Beads in Nan Robkin's collection | (Right) Tin by Charlie Nagel



(Left) Lentil Swirl Beads with dichroic effect by Kim Day  
(Right) Artist Trading Card by Charlie Nagel



(Left) Translucent mokume gane canes by Charlie Nagel  
(Right) Mermaid by Ria Mendoza Hoyt

---

## Clay Camp Swag Bags



On top of the usual things we look forward to at Clay Camp – crafting, making new friends, meeting old friends, enjoying nature and the superlicious food, we also get to look forward to receiving free products to test from this year's donors: Polyform, Clay Farctory, Inc., Makins Clay, The Great Create, Lucy Tools and Polymer Week.

Yes, this also means great raffle items within the week! Deadline of registration is May 3 – sign up today, go to [www.nwpcg.org](http://www.nwpcg.org).

---

## Programs

*May 2018 Program*

### Symphony of Spirals

By Cathy Gilbert | May 2 | 6:30 p.m. | [Artworks](#)





Last year, we took the bullseye cane and twisted it several different ways to come up with some fun variations. This time around, we're going to look at the deceptively simple spiral cane. It's amazing the different looks you can get just by varying the size and number of layers, as well as tweaking the layers in some interesting ways. I call this a Symphony of Spirals and I can't wait to see what people come up with."

Supplies if you want to clay along...

- Conditioned clay in a variety of colors (including translucent)
- Pasta Machine
- Roller
- Blade
- Work Surface

See you soon!

---

*June 2018 Program*

## **Please Do Show & Tell**

By Cathy Gilbert | June 6 | 6:30 p.m. | [Artworks](#)



One of the things I especially like about Clay Camp is seeing what everyone is making. We have a Clay Social scheduled for June, so it's a perfect time to come to the meeting and show off your creations from Camp! It's also a chance to finish up those odds and ends that didn't get completed. And, is it ever too soon to get started on NEXT year's Clay Camp? Never!

See you soon!

Have a program idea? Contact Cathy, click the button below.

[Email Cathy!](#)



President's Message | [president@nwpcg.org](mailto:president@nwpcg.org)

**Updates & Clay Camp**

Due to recent events, we had to adjust our Board positions, so here is our current official line-up:

Guild President (and Librarian) - Kim Day

Guild VP of Membership and Secretary (and Technology Chair) - Maria Brown

Guild VP of Programs and Treasurer - Cathy Gilbert

Newsletter Editor – Ria Mendoza Hoyt

As you can see, we could use some additional help! This is a lot of work for just a few people. As a volunteer run organization, we don't want to run out of volunteers. If you're willing to help but not sure how, just ask. We've moved almost all Board member communication to email, so physical presence isn't even required.

On to the happier stuff. Clay Camp is almost here!!! The event many of us look forward to all year. We have amazing returning teachers and amazing new teachers. Meredith and Maria have both been superstars with the behind the scenes magic, thanks gals!

One thing I think people are confused about is the swap. Please sign up! I'll extend the deadline to sign up until next meeting. If you want to swap, you must sign up ahead of time. This is because the Artist Trading Cards are time intensive, and we want all participants to have a particular number to make (one for each other participant). E-mail me to sign up, [polymerclay@gmail.com](mailto:polymerclay@gmail.com).

Another question I received is about the brown bag exchange, since it's not on the website. Yes, we are doing the brown bag exchange this year. It will be after the raffle, so people that want to sleep early do not need to participate and stay up late for it.

Looking forward to seeing many of you there!

Love much,

***Kim Day***

## Announcements

### ***Precious Metal Clay Class***

(Limited to five participants)

Explore a quick and fun way to create custom texture plates and apply them onto metal clay to make fine silver charms of your own unique designs. From start to finish make earrings, pendants or dangles – it's all up to you.



Materials fee of \$30 for 9 gram package of PMC3, some metal clay paste, cutting tool, work surface, and handout. Other equipment and tools will be supplied for use in class. Pieces will be fired at 1:15 pm for finishing by 3:00 pm so you can take finished work home! For more info and to register, [please click here](#).

## Are you registered for Clay Camp yet?

May 17-21 | Camp Huston, Gold Bar, WA

Deadline of registration: May 3rd | Sign up today!

[NWPCG website](#)



Newsletter Editor and Designer: Ria Mendoza Hoyt | [newsletter@nwpcg.org](mailto:newsletter@nwpcg.org)

Photos taken during NWPCG events may be used for promotional materials

**Copyright © \*2018 Northwest Polymer Clay Guild, All rights reserved.**

You are receiving this newsletter because you are an NWPCG member, Friend or you subscribed to our emailers.

**The Northwest Polymer Clay Guild is a 501(c)(3) non-profit organization**

**EIN# 91-1713162** | Our mailing address is:

Northwest Polymer Clay Guild (NWPCG)

P.O. Box 904

Lynnwood, WA 98046

Add us to your address book

NWPCG Raven logo, © Meredith Arnold 1995 and Ravensdale 2003 logo, © Meredith Arnold, 2002  
Any reproduction in whole or in part of copyrighted logos is strictly prohibited without the prior written permission of Meredith Arnold.

You are receiving this email because you are a member of NWPCG or one of NWPCG's friends.

We'd hate to see you go but if you want to change how you receive these emails, you can  
*UPDATE YOUR PROFILE* ([click here](#)) or unsubscribe from this list.

