



Northwest Polymer Clay Guild

Clay Play



Guild Highlights

Extruder Stuff

By Kim Day

Contents

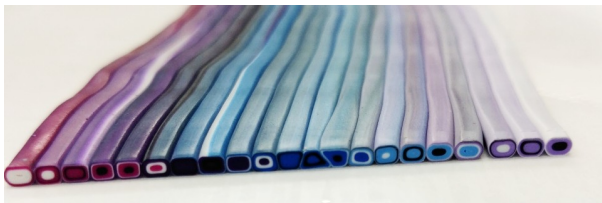
From top to bottom:

- Guild Highlights
 - Extruder
 - Fair Round-up
- Show & Tell
- Programs
 - Oct: Clay Social
 - Nov: Round Robin
- Elections
- Upcoming Activities
- President's Message

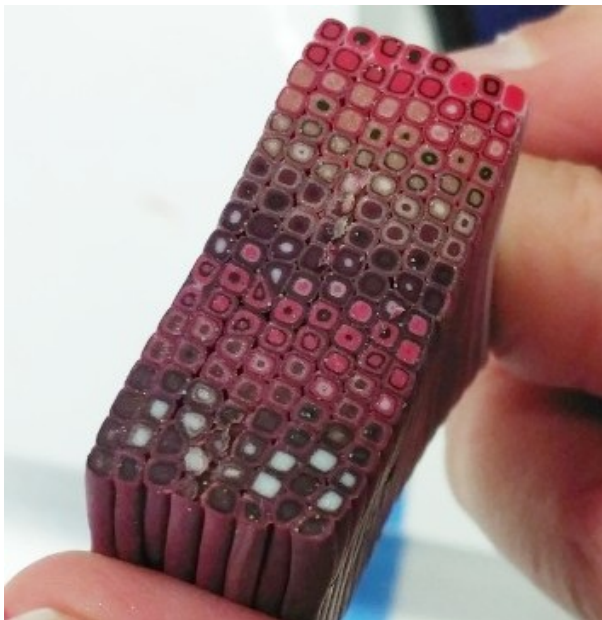


Patti hard at work

For our August program, I showed people some of the uses of extruders – square retro cane, making a pixel parrot from a perler bead pattern, filigree eggs, cutting pieces off a wrapped bead. We brought out the Lucy extruder and showed a channeled bracelet, and a color changing heart cane.



Retro cane



Patti's finished cane

- Announcements

NWPCG Program

Oct 3 | 6:30 p.m.

| [Artworks](#)

Bring any project you are working on and clay with us. We'll catch up and share stories and techniques while doing so!

NWPCG Clay Day

Oct 13 & Dec 8 | 9:00 -

5:00 | [Third Place](#)

[Commons](#)

Join us for a day of claying at Third Place Commons, Town Center at Lake Forest Park. We'll be in a long table by the stage.

NWPCG Program

Nov 7 | 6:30 p.m.

| [Artworks](#)

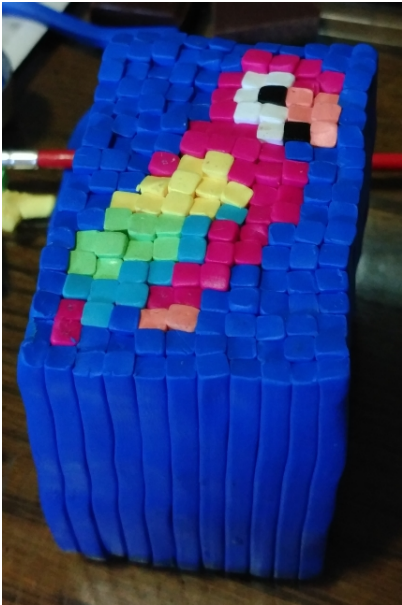
It's Round Robin with Charles Nagel teaching us the Mokume Gane technique and Cathy Gilbert showing us how to make realistic or non-realistic snake sculptures.

Spread the Word

Help us spread the word, share our [FB](#), [Instagram](#) and [Pinterest](#) accounts in your social media.

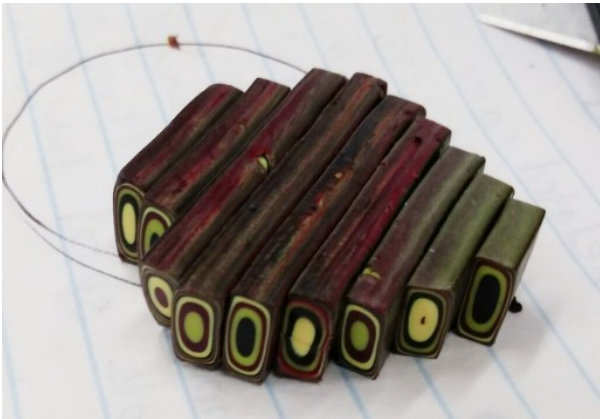
Amazon Smile

Shopping on Amazon? Choose the Northwest Polymer Clay Guild as recipient of [Amazon Smile](#) and [with every eligible](#)



Parrot cane

The final and main part of the program was a clay along pixelated retro cane a la Bettina Welker. You can see the official instructions [online here](#). While only one person brought clay to play along, hopefully people were inspired by some of the things they saw.



[purchase, Amazon will donate 0.5% to our Guild.](#)

Show your works

Showcase your works, finished or in progress in our [Instagram account](#). [Email photos with caption to Ria.](#)

Main photo: Finished cane by Kim Day

Guild Highlights photos by Kim Day, Patti Steele-Smith and Liz White

Fair Round-up and Show & Tell photos by Kim Day

Fairs Round-up in Photos

Evergreen State Fair and Washington State Fair 2018





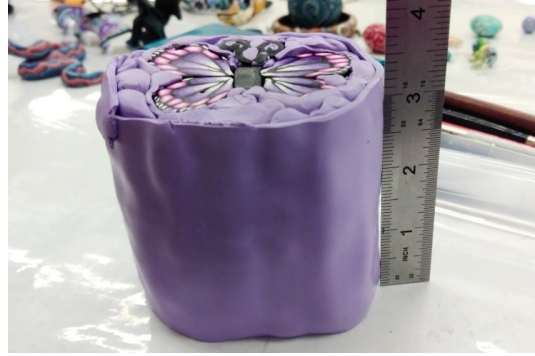
More awards for Cathy Gilbert (L) and beads Kim Day made during the demo (L).



Katie Weibel and her canes



Patti and reindeer sculpture



Cathy, Kim and Liz (L) and Kim's giant butterfly cane (R)



Liz and her creations



Cathy Gilbert and her creations



Carla (L) and Rita's Fair demo materials (R)



Keychains donated by Kim Day (L) and Liz White (R)



Keychains donated by Ria Mendoza Hoyt (L) and Krithika Parthan (R)



Our awesome banner featuring Cathy Gilbert's polymer clay covered letters

Show & Tell



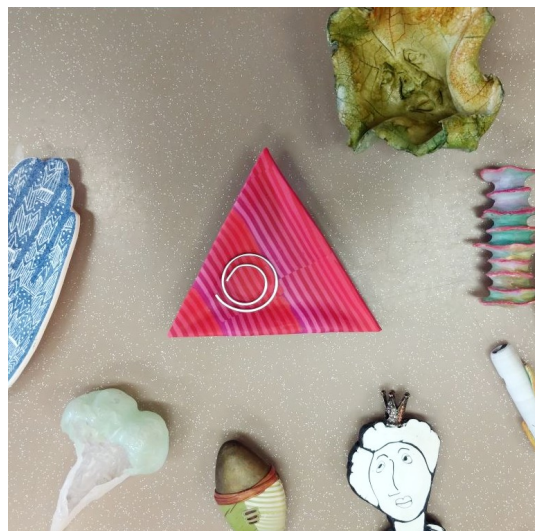
By Charlie Nagel - faux jade and heart with extruder canes (L) and Keychains by Liz White (R)



Wall arts by Charlie Nagel (L) and Victoria Raymond (R)



Pieces from the Colorado Retreat, collection by Meredith Arnold



Pieces from the Colorado Retreat, collection by Meredith Arnold



Pieces from the Colorado Retreat, collection by Meredith Arnold



Pieces from the Colorado Retreat, collection by Meredith Arnold



Pieces from the Colorado Retreat, collection by Meredith Arnold

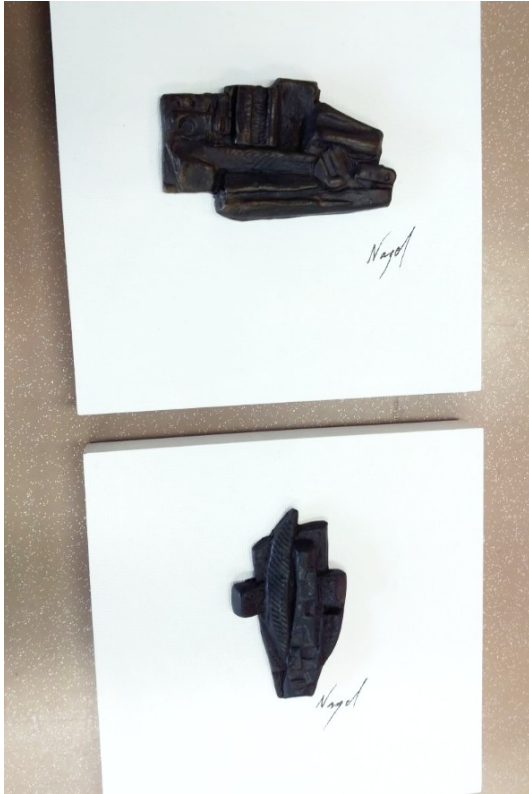
Pieces from the Colorado Retreat were made by Randee Ketzler, Julie Eakes, Alice Stroppel, Rebecca Watkins, Mari O'Dell, Laurie Prophater, Laurel Swetnam, Wendy Malinow, Syndee Holt, Cynthia Tineapple, Joan Tayler, Helen Breil, Emily Squires Levine and Katie Way.



Necklace by Jane Hoffman in Nan Robkin's collection



Steampunk heart and metal bracelet by Nan Robkin (L) and Bowl by Marie Segal in Nan Robkin's collection (R)



Wall art by Charlie Nagel (L) and ATC by Liz White (R)



Hairclips and wall art by Aparna Radhakrishnan



Keychains and ATC by Liz White



ATCs by Liz White



Canes by Kim Day from the latest cane builder tutorial

Remembering Terri

By Liz White

At the Fair, we saw this flyer for a memorial bench for our dear friend Terri Standley. She had been very involved with Artists in Action at the Washington State Fair and we thought this would be good to share here.



Editor's Note: Please be advised that collections above the bench purchase will go to Partnership for Drug-Free Kids. NWPCG is not a political organization and neither supports or advocates for/against any beliefs held by the Partnership for Drug-Free Kids.

Programs

NWPCG Monthly Meeting | First Wednesday of the month

October Program: **Clay Social**

By Kim Day | October 3 | 6:30 p.m. | [Artworks](#)



Bring your clay and/or your curiosity. Spend some time creating or watching others create while having a good time with some awesome people.

November Program: **Round Robin**

By Kim Day | November 7 | 6:30 p.m. | [Artworks](#)

Mokume Gane

Charlie will be teaching mokume gane, a technique of stacked sheets of clay that are distressed or textured to create interesting patterns when sliced.

Sculpted Snakes

Cathy will be teaching how to make realistic (or non-realistic, your choice) sculpted snakes. Since there are no exotic supplies required outside the usual clay/work surface/pasta machine/blade, we'll post the full supply list in next month's newsletter.

Have a program idea? Contact Cathy, click the button below.



October Elections

By Kim Day

We have three positions up for election, with one candidate per spot. Thanks to those who volunteered! The volunteers are:

Susan Locsin - Secretary

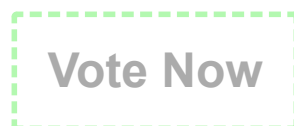
Cathy Gilbert - Treasurer

Grace Seto - VP of Membership

Even though we only have one volunteer for each position, we can also vote any active member for the position.

Please click the button below to cast your ballot. This button will open a new window to your email browser. Write the name of the candidate you want to vote for each position and send.

If you do not wish to vote via email, we will also have in-person ballots at the October meeting.



Upcoming Activities

By Kim Day

October Clay Day



There's another Clay Day at Third Place Books Commons on October 13th! Bring your clay supplies and either a bagged lunch or money to buy one at the nearby restaurants, and clay all day long – or for as long as you'd like, no pressure. But some of us die hards will be there from 9:00 a.m. to 5:00 p.m. happily claying. This is a good time to work on some of your Christmas projects without it being too last minute. If you work better under pressure, there's another one in the beginning of December too.

Polymer Clay Gingerbread House Decorating Party/Potluck



Polymer clay gingerbread house by Maria Brown

This is a repost from the last newsletter, but with a few additions. We have a venue! Susan Locsin and her husband have generously opened up their new house in Issaquah for us. I will be posting this on the meetup group shortly, and we will have a maximum number of around 22 people (so far 6 have signed up), so if you're interested, please RSVP asap iykwim. There will be a dog present, if there is a life threatening allergy I thought people should know.

When: Saturday, November 3rd

Time: 10:00 a.m. to 5:00 p.m.

Where: Susan's house, Issaquah. Address will be given to those who RSVP.

Now we know, so you can start on those candies! Make enough to share with probably four other people. More is fine of course, if you get the clay candy bug. I'm also going to stick in the word RSVP here again in case you missed it earlier.

Here's what you need to bring:

- Polymer clay
- Polymer clay candies (baked and ready to use)
- Polymer clay tools
- Work surface
- Potluck dish



Candies from 2016 and 2017 parties

Type of candies people have made in past years ($\frac{1}{4}$ scale, so something that would be an inch wide in real life would be $\frac{1}{4}$ inch wide in candy mini version) include mini chocolate chips, necco wafers, ribbon candy, licorice allsorts, frosted sugar cookies, gumdrops, gummy bears, lollipops, rock candy, peppermints, m&ms, red hots, Christmas candy corn. Just make lots of one or two types and share with your fellow claymates, and we all end up with a fantastic variety. We will be using premade gingerbread house pieces from a cookie cutter set, but if you want to make your own custom house that's okay too. We make our own frosting/glue from liquid kato and white polymer clay.

Please RSVP to Kim Day polymerclay@gmail.com thanks!

Gingerbread Party RSVP - sign me up!



President's Message | president@nwpcg.org

A busy month for me!

Please congratulate me for being an empty nester, with the kid off to college. Yes, he may come back, but I once again have a car to drive.

We had fabulous demos at both Fairs this year. My thanks to Cathy, Maria, Liz, Katie, Kim M, Krithika, Rita, Patti and Carla for coming and demoing. Extra special thanks to Ria, Krithika and Liz for their generous contributions to the keychain drive. For the first time we ran out, but everyone that got one (and there were lots! I'd guess 1,000) loved them, and some may even show up at our Third Place Books Clay Days. We had many people look on in amazement that polymer clay could do

so many things. Some were introduced to it for the first time, some had tried it years ago and suddenly had an itch to try again. :)

Cathy and I collected some ribbons at the two Fairs, with Cathy winning some gigantic ones at the Evergreen Fair.

The Guild makes me happy knowing I have clay friends to see each time, with the possibility of new clay friends as well. I'm pretty excited about our future, and hope we can see continued growth and fresh faces.

Please read the newsletter, some things require sign ups, and Ria does such a beautiful job it's no hardship to look through.

Happy Claying,

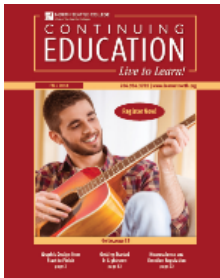
Kim Day

polymerclay@gmail.com

Announcements

By Meredith Arnold

New Polymer Workshop with Meredith Arnold



Learn to make polymer clay pendants, beads, earrings, buttons, simple canes and even a box in which to keep them! Learn to condition, mix, cut, bake, polish and seal your clay pieces. Explore creating textures and patterns using rubber stamps, found objects, metal shape cutters, stencils, acrylic paint, mica powders and more. Go home with original art ready for wear or display. A \$10 materials fee is due to instructor on the first day of class. [Click here for more information.](#)

Class Fee: \$199

Where: North Seattle Community College

When: Tuesdays, October 23 - December 11, 2018 | 10:00 a.m. - 1:00 p.m.

Encrusted with Jana Roberts Benzon

Learn Jana's newest approach to creating jewelry using an ingenious and adaptable technique which transforms the work into tiny sculptures. For more information and to register, [click here.](#)



Class Fee: \$180

When: Oct. 27 - 28, 2018; 9:00 a.m. - 4:30 p.m.

[NWPCG website](#)



Newsletter Editor & Designer: Ria Mendoza Hoyt | newsletter@nwpcg.org

Photos taken during NWPCG events may be used for promotional materials

Copyright © *2018 Northwest Polymer Clay Guild, All rights reserved.

NWPCG Raven logo, © Meredith Arnold 1995 and Ravensdale 2003 logo, © Meredith Arnold, 2002
Any reproduction in whole or in part of copyrighted logos is strictly prohibited without the prior written permission of Meredith Arnold.

You are receiving this email because you are a member of NWPCG or one of NWPCG's friends.

We'd hate to see you go but if you want to change how you receive these emails, you can
UPDATE YOUR PROFILE (click here) or unsubscribe from this list.

