

---

# Texture Recap, Elections & More!

From: Northwest Polymer Clay Guild Newsletter <newsletter@nwpcg.org>

To: Maria Jam <mariajambrown@yahoo.com>

---

Volume 27 | Issue 09 | September 2020

[View this email in your browser](#)



Hi Maria Jam! Here's what we've been up to:

## Guild Highlights: Texture Rolls & Stamps Recap

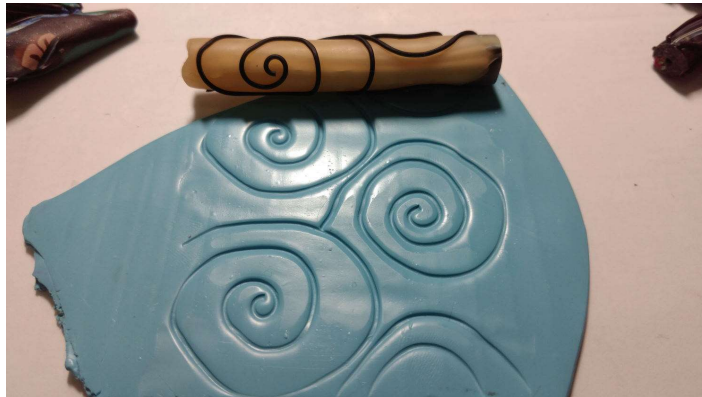
By Kim Day | [polymerclay@gmail.com](mailto:polymerclay@gmail.com)

Last meeting, I showed a lot of examples of different ways you could make texture rollers and texture stamps, but it was a lot of information thrown out at once, so here's an easy to follow reminder of what you saw.

### **Easiest way to make a texture roller**

Roll out a snake of clay (mine are usually 0.5 inch or so in diameter, but larger sizes can be used for a design that doesn't repeat for a longer distance).

Add raised pieces to the snake. Bake. Some of my favorite pieces to add include extruded strings or pieces of clay from a cookie cutter



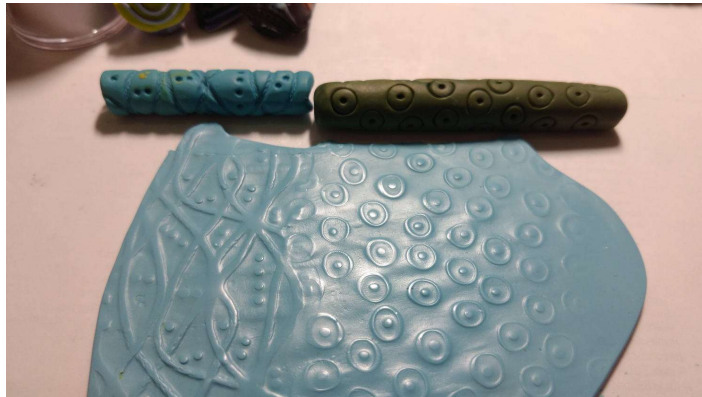
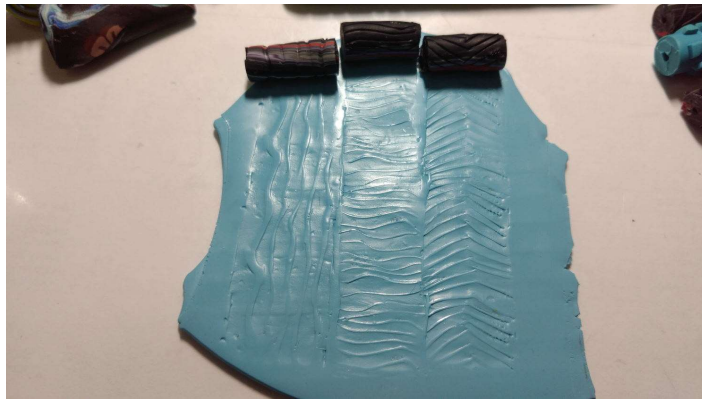
For complicated designs, it can be easier to create this raw snake over a skewer. Then you can rotate the roller to add designs.

For designs with repeating patterns, you can draw on the clay or gently mark it into sections, so that you can evenly space your pattern without ending with two of the same thing in a row. Example -|-|-|| vs -|-|-|-|

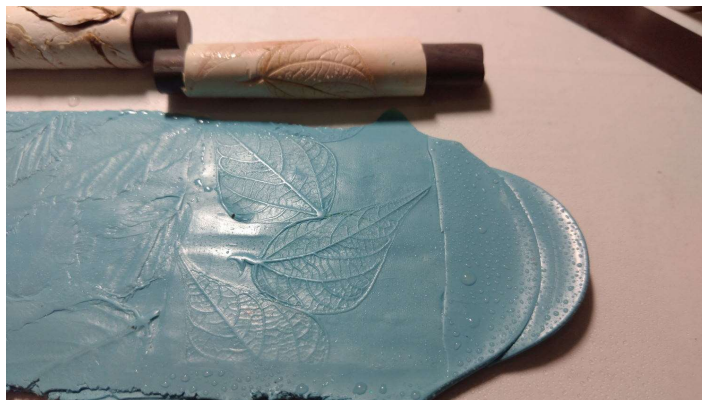
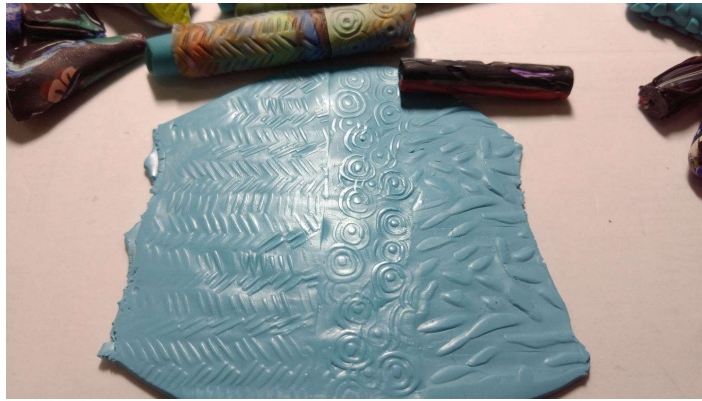
### **To use**

If the design elements are not too deep, you can usually get away without using any release agent. Otherwise, my favorite thing to keep it from sticking to the clay sheet you're rolling it on is a spritz of water onto the clay sheet.

Adding raised pieces to a texture roller creates a design that goes inward. To get a raised design, there needs to be an indented design in the roller. Simple things such as carved lines or wrapped pieces of string worked okay, but more complicated ones squished the roller.



My workaround was to bake the snake, add unbaked clay around the middle while leaving end pieces of the baked clay sticking out for handles. With a solid core, you can more easily impress patterns into the raw clay without deforming it. If you don't like the handles on your finished product, remember it is easy to cut baked clay when it is still warm from the oven.



For the leaf rollers, I'd recommend using a release agent and taking off the leaves before baking. Some of my leaf parts didn't come off the baked clay, and others came off and took the baked clay with it (not pictured, you just get to see the one that turned out).

And here is where I went down the rabbit hole- I wanted to be able to do more than impress cookie cutters or pieces of string. So along came my new addiction, texture stamps.

They can be as simple as a button glued onto a clay handle, a bundle of toothpicks in a clay handle. My focus however was on creating your own.

Like the rollers, added pieces of clay leave an indented design, and carved or stamped pieces leave a raised design. These tiny little stamps are so versatile in that they can add little pieces of texture anywhere, and be combined with other stamps as well to make designs. I learned you want your handle to be the same width as the thing you're stamping at the bottom for an even impression. (ie, not what the giant feather is like) For the leaf stamp, I cut out a roughly leaf shaped piece, drew in veins with my needle tool, and stuck it to a scrap clay handle.



You can make a stamp with raw clay to raw clay, or you can attach baked pieces together, or baked to unbaked.

Here are some with raised extruded pieces (easier to get nice uniform lines).



You can use tessellated stamps (square, triangle, scallop, weirdly pointed oval, diamonds, etc) to create a larger pattern. The far left one I put the raised pieces onto

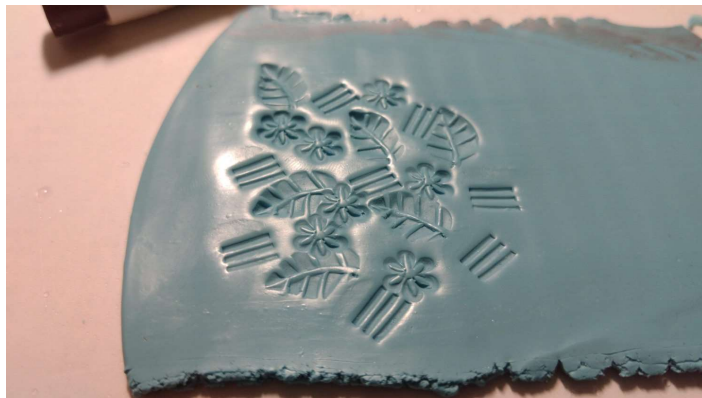
a transferred image so I could get the angles exactly perfect.



One other difference between a raised vs indented design is that the indented design also leaves a border around your image. You can use this intentionally (see far right), or you can round the edges to get a softer border.



And of course, the best part about the texture stamps is that you can combine them all in any fashion to create unique designs.



Lastly, here's a finished piece made using these homemade texture stamps, to give you some more fuel for the fire. For this heart pendant, I first lined up the three colors of clay (striped, turquoise, black) and burnished them together. I painted the turquoise with silver pearlex, then stamped it with a flower stamp. I used a paper towel with alcohol to wipe off the pearlex on the parts that weren't indented. Then I used the rounded starburst stamp (fancy way of saying the one with the lines dragged from the center outwards) on the black clay, and highlighted the raised

areas with blue pearlex. Some glitter for the striped area, baked it, then added UV resin because it goes wonderfully with pearlex.



I hope you find these texture stamps as exciting as I did. If you end up making your own rollers or stamps, I'd love to see them.

---

## Show & Tell



By Dawn Gray



Dawn Gray's Cane Filing System



Ear Savers by Dawn Gray



Earring and pendant set by Esther Gross





Earring and pendant set by Esther Gross



Earring and pendant set by Esther Gross



Veneer by Esther Gross



By Kim Day



Bracelet by Kim Day



Cane By Maria Brown



Cane by Maria Brown



Lizard tail zipper pulls by Maria Brown



Texture stamps by Ria M. Hoyt



Canes by Cathy Gilbert



Canes by Cathy Gilbert

---

## September Program: How to Revive Old Clay and Canes

By Kim Day | Zoom | September 2nd | 6:30 p.m.



This will not be a hands on program, just a short instructional bit. So feel free to bring something (clay or otherwise) to work on afterwards while we talk. I will talk about

some of the various methods people use to salvage old clay or cracking canes.

---

## Online Meetings: Zoom with Us!

By Kim Day | [polymerclay@gmail.com](mailto:polymerclay@gmail.com)



We have our monthly meeting over Zoom the first Wednesday of the month from 6:30 p.m.-9:00 p.m.

We also have small informal clay days every Wednesday 6:30-9:00 p.m. and every Saturday 9:00 a.m.-noon. All of these use the same Zoom link.

You are welcome to invite other people you know to these, there is no membership requirement for our informal get togethers. They can also craft with other mediums than clay.

If you'd like to be on an email list for people who want to schedule Zoom things outside these Wednesday and Saturday times, please let me know with very specific words "Add me to the Zoom e-mail list" at [polymerclay@gmail.com](mailto:polymerclay@gmail.com)

[Zoom Link](#)

Meeting ID: 988 553 9980

Password: clayisfun

Zoom with Us

---

## Announcement

# Call for Volunteers: Board Positions

By Kim Day | [polymerclay@gmail.com](mailto:polymerclay@gmail.com)

# Volunteers!



We will be voting in October for the following board positions for a two-year term starting in January 2021.

## **VP of Membership**

Keeps track of active memberships and email list, which are mostly automated. This is a voting position for Guild matters that require board votes.

## **Treasurer**

Makes sure Guild fees are paid, issue reimbursements of other members settled Guild fees (meetup, storage unit, rent, insurance, PO Box, etc.). Issue payments to teachers for Guild programs and round robins. Keep track of Guild spending and help make an annual budget to be presented each January. Do Guild taxes (log in and click the button that says we make less than 50k, easy peasy). This is a voting position for Guild matters that require board votes.

## **Secretary**

Keeps meeting minutes for our annual board meeting, update changes to our Guild Standing Rules if any are voted on. This is a voting position for Guild matters that require board votes.

All three positions can be done remotely, so there is no requirement to attend a certain number of meetings. We are lucky to have all three of our current board members for these positions willing to run again, but we still need to vote. Our treasurer is quite busy with real life things, so a replacement would be welcome. The VP of membership is also happy to let someone else have a chance.

Let me know by email, [polymerclay@gmail.com](mailto:polymerclay@gmail.com), if you're interested in any of these positions or have further questions.



# Art Oasis Retreats on Zoom

By Meredith Arnold | [www.mereditharnold.com](http://www.mereditharnold.com)



[HOME](#) > [CLASSES](#) > [CLASS PROPOSAL](#)



ArtWorks will be offering a series of online art retreats starting in September. Interested in teaching polymer clay classes on Zoom? Here are the details:

Each Art Oasis Retreat will offer a variety of classes over a span of four to six weeks. Each class session is two hours. I'm asking each instructor to teach at least two sessions (two hours each) during each retreat but teachers can offer up to six sessions. Each class session can be a complete standalone class or could be one program that builds through multiple two-hour sessions. Instructors will be able to pick their dates/times.

Teachers will be paid \$18.75 per student registration. The sessions will cost \$25 to students. Participants will be able to exhibit resulting work on the ArtWorks website for a specific period of time and participate in a private forum (on the ArtWorks website) to be able to interact with other students and teacher. We have some details to figure out for the private forum still.

The timeline is as follows:

First retreat: [Sept. 28 - Nov. 6](#). Class proposals are [due August 31](#).

Second retreat: [Feb. 1 - March 12](#). Class proposals are [due November 20](#).

Third retreat: [April 5 - May 14](#). Class proposals are [due February 19](#).

Teachers can pick their days and times. To submit a class proposal use this [link](#) or the button below.

[Submit a proposal](#)

---

# President's Message

By Kim Day | [polymerclay@gmail.com](mailto:polymerclay@gmail.com)



## Stoicism & 2020

Hello Dear Clayers,

As I'm writing this, we just survived the crazy heat wave, and once again I'm wondering if I should buy AC for the 10 days a year we need it...

We're living in a crazy time of science vs politics, of being in fear for our health and that of our loved ones and of fear of the loss of democracy. I try not to be political in these messages, since this is a fun social crafting group, but I just wanted to acknowledge that this is a volatile and stressful time.

It makes me even more grateful to have this lovely group of people, and this amazing medium to create stuff with. For me, clay is one of those odd things where I never quite feel like doing it (what do I need, a feeling of nirvana and oneness with the universe?), but I know once I start I will have fun. Even getting on Zoom to spend time with my clay buds in a low key and friendly environment sometimes feels hard, but again, once I'm there I remember why I love it so much.

I've been reading about self-discipline, a little bit about stoicism, and an idea that resonates with me is that growth comes from leaving our comfort zone. That successful or skilled people are willing to fail as well as succeed. Now to apply this to myself and dragon making...

Anyways, please send show and tell pictures for the newsletter. Right now we're seeing the somewhat blurry images people hold up in the Zoom sessions, but I liked pretty colored pictures, and not every member makes every Zoom session.

Clay on!

*Kim Day*



## Update your Info

New members need to sign-up to our newsletter, the sign-up form is included in your NWPCG Welcome email from Membership.

Changing your email? You can [update your personal](#) information to ensure that you receive our newsletter. You can also add your website or social media links to your profile. This link is also available in every newsletter at the footer area.

If you haven't yet, please add "newsletter@nwpcg.org" to your address book so our newsletters do not go to spam.

Update

 Forward

---

[NWPCG website](#)



Newsletter Editor & Designer: Ria Mendoza Hoyt | [ria@orangejar.com](mailto:ria@orangejar.com) Photos taken during NWPCG events may be used for promotional materials

**Copyright © \*2020 Northwest Polymer Clay Guild, All rights reserved.**

You are receiving this newsletter because you are an NWPCG member, Friend or you subscribed to our emailers.

**The Northwest Polymer Clay Guild is a 501(c)(3) non-profit organization**

**EIN# 91-1713162** | Our mailing address is:

Northwest Polymer Clay Guild (NWPCG)

P.O. Box 904

Lynnwood, WA 98046

Add us to your address book

NWPCG Raven logo, © Meredith Arnold 1995 and Ravensdale 2003 logo, © Meredith Arnold, 2002  
Any reproduction in whole or in part of copyrighted logos is strictly prohibited without the prior written  
permission of Meredith Arnold.

You are receiving this email because you are a member of NWPCG or one of NWPCG's friends.

We'd hate to see you go but if you want to change how you receive these emails, you can  
*UPDATE YOUR PROFILE* ([click here](#)) or unsubscribe from this list.

