



Northwest Polymer Clay Guild

Clay Play



Guild Highlights

Liquid Clays and Liquid Sculpey Clear

By Meredith Arnold

Contents

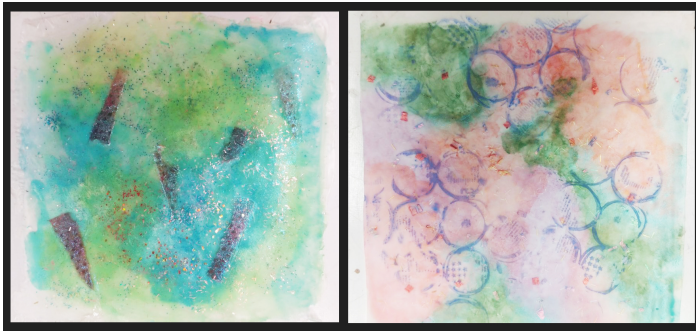
From top to bottom:

- Guild Highlights
- Clay Camp ezine Correction
- Show & Tell
- Programs
 - Sept: Extruder Mania
 - Oct: Clay Social



Liquid Clay earrings by Meredith Arnold

The August meeting presentation was about the different brands of liquid clays with a focus in the Sculpey Clear. I provided some cured samples for comparison of the Sculpey Clear and Sculpey Translucent cast into a mold as well as some veneers I made using a mixture of Translucent Liquid Sculpey, Kato liquid clay, and Fimo Gel (in photos). The top photo shows clay face transfers on my doll pendants and pin.



Left: Liquid clay veneer with embedded paper; Right: Liquid clay veneer painted with rubber stamped layers



Right - liquid clay veneer with more layers

- Upcoming Activities
- President's Message
- Announcements

NWPCG Program

Sept 5 | 6:30 p.m.

| Artworks

Dive with us and explore the diverse possibilities of extruders. Kim Day will demo filigree, bracelet blanks, retro cane and more! For details, check the Programs section below.

NWPCG Program

Oct 3 | 6:30 p.m.

| Artworks

Bring any project you are working on and clay with us. We'll catch up and share stories and techniques while doing so!

NWPCG Clay Day

Oct 13 & Dec 8 | 9:00 - 5:00 | Third Place

Commons

Join us for a day of claying at Third Place Commons, Town Center at Lake Forest Park. We'll be in a long table by the stage.

NWPCG Demos

We need more volunteers to demo at the Washington State Fair in Puyallup on September 10th and 22nd. This is a fun time to work on personal projects or practice making polymer clay canes. For more details, go to Upcoming Activities below.



Black and gold mixed for the background

The biggest difference between Sculpey Clear and other liquid clays is that the Clear is *really* clear. It is thinner than other liquid clays so runny but it will thicken up over time. Use Clay Softener (diluent in 'oldspeak') to thin it out if needed.



Colored Liquid Clay used in a mold



Liquid Clay veneer set into a channel bracelet

Some great options for using the Sculpey Clear include using it as a sealer or surface finish, as a glue for pre-baked polymer components, for very clear photo transfers, creating veneers for laying

Spread the Word

Help us spread the word, share our [FB](#), [Instagram](#) and [Pinterest](#) accounts in your social media.

Amazon Smile

Shopping on Amazon? Choose the Northwest Polymer Clay Guild as recipient of [Amazon Smile](#) and with every eligible purchase, Amazon will donate 0.5% to our Guild.

Show your works

Showcase your works, finished or in progress in our [Instagram](#) account. [Email photos with caption to Ria.](#)

NWPCG Clay Camp 2018

Have you downloaded your copy of the ezine yet? If not, just [clink on the cover below](#) (10.9 mb):



[For a higher resolution copy \(218.4 mb\), click here.](#)

Liquid Clay photos and liquid clay work samples by Meredith Arnold

Show & Tell photos by Kim

into channel bracelets or bezels and even casting into a mold. It is wonderfully clear even after baking but can be colored by mixing it thoroughly into bits of clay (it will be thicker then), or mixing a small amount of acrylic paint or eyeshadows or PearlEx powders. Explore this great medium sometime and bring your results for show and tell!

Day

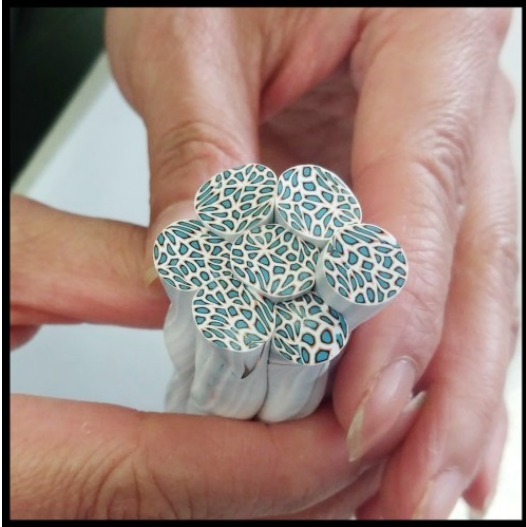


Top: Students working on their own projects at the first NWPCG Free Beginner's Class

Free Beginner's Classes

By Kim Day

I'm happy to report that our first ever free beginner's class was a wonderful success! We had 19 people show up after finding us through things like Meetup, Artworks, and our website. With the help of Cathy, Maria and Katie, in a three hour class we taught them from the basics of how to condition clay all the way through bullseye, lace canes, and how to use them for buttons and beads. Take a look at some of the awesome things they made! We raffled off to those that came a bowl I made only from bullseye canes. I think I might have to do some more of those, that was fun to make. Our next beginner's class will be in February, so if you have someone that might be interested, show them some of these great pictures and get them excited about clay!



Student works



Correction: Clay Camp 2018 ezine



Apologies to Mariah Hall who made the Clay Camp stickers! Other captions in the Gallery were also corrected. You can now download the updated files using the links provided before or download it here:

[Hi-res \(218.4mb\)](#)

[Low-res \(10.9mb\)](#)

If you have any issues downloading the file, [please email Ria MH](#).

Show & Tell



By Jayne Hoffman (L) and Pieces by Cynthia Toops from Nan Robkin's collection (R)



Work by Kim Day (L); Piece from Nan Robkin's collection (R)



By Piece by Charlie Nagel (L) and Chatoyant bracelet by Natalia Garcíá de Leániz (R)



Necklace



Switch plates by Liz White



Birds by Maria Brown



Pendant from Marie Segal's class at Clay Camp 2017



Bracelet

Programs

NWPCG Monthly Meeting



September Program: **Extruder Mania**

By Kim Day | September 5 | 6:30 p.m. | [Artworks](#)

Kim Day will lead a program in some various uses of extruders. There will be some demos of the extruder possibilities, including filigree, bracelet blanks, retro cane, the Lucy extruder with some fancy extruded canes, and carved wrapped beads. In addition to the demos, there will be a clay along portion to make a pixelated retro cane a la Bettina Welker. If you'd like to clay along, please bring the following supplies.

- Approximately $\frac{1}{4}$ a block each of 5 colors in a gradient (or one large 3+ color skinner blend)
- About $\frac{1}{2}$ a block each of white and black clay
- Makins brand extruder
- Pasta machine or roller
- Clay blade

October Program: **Clay Social**

By Cathy Gilbert | October 3 | 6:30 p.m. | [Artworks](#)



Bring any projects you are working on and come for a great night of claying and socializing fun!

Have a program idea? Contact Cathy, click the button below.

[Email Cathy!](#)

Upcoming **Activities**

By Kim Day

Washington State Fair Volunteers Needed



We need more demoers for the Washington State Fair (or Puyallup Fair, as I shall forever call it) on Monday, September 10th from 2:30 pm until 9:30 pm and Saturday September 22nd from 9:30 am until 9:30 pm. It is a long drive but always so much fun. We bring a clay oven so you can bake projects as well. You can work on a projec, or do lentil swirl beads for hours (they love it!). When we have more than four people, we also take some time and check out things like the Hobby Hall and the quilt contest.

Please sign up for as many of the four-hour blocks as you wish, our goal is to have four people "on duty" at all times. Sign up by e-mail to me, polymerclay@gmail.com. I have the entrance and parking tickets for those that can come.

September 10

2:30 - 6:30

6:00 - 9:30

September 22

9:30 am - 1:30 pm

1:30 pm - 5:30 pm

5:30 pm - 9:30 pm

It's Keychain Time!



Well, it's kind of always key chain time. As part of our Evergreen State Fair and Washington State Fair outreach, we hand out key chains with a polymer clay bead/charm along with our business card. The past few years we've given out over 1000 a year. If you would like to donate any polymer clay beads, canes that can be sliced for beads, or premade key chains (the Guild has key rings available for this purpose), we would welcome any donations. Lentil swirl beads are popular key chain beads and a wonderful use of scrap clay, as are stamped and mica powdered shapes. You may donate any time, and if you miss the deadline for the Fair this year we'll add them to next year's. :)

Polymer Clay Gingerbread House Decorating Party/Potluck



Gingerbread house by Dawn Gray (2017)

We will again be having a gingerbread house party! Sorry for the exclamation points!!

When: Saturday, November 3rd

Time: 10am to 5pm

Where: Venue and details to be announced

So, we don't know where, but it will be great. But I wanted to announce it anyways so you could make room on your schedule, and start on those candies!



PC gingerbread houses from the 2017 party

Here's what you need to bring:

- Polymer clay
- Polymer clay candies (baked and ready to use)
- Polymer clay tools
- Work surface
- Potluck dish

Type of candies people have made in past years (¼ scale, so something that would be an inch wide in real life would be ¼ inch wide in candy mini version) include mini chocolate chips, necco wafers, ribbon candy, licorice allsorts, sugar cookies, gumdrops, gummy bears, lollipops, rock candy, peppermints, m&ms, red hots, Christmas candy corn. Just make lots of one or two types and share with your fellow claymates, and we all end up with a fantastic variety. We will be using premade gingerbread house pieces from a cookie cutter set, but if you want to make your own custom house that's okay too. We make our own frosting/glue from liquid kato and white polymer clay.



Candies from 2016 and 2017 parties

Since the number of people planning to attend will affect where we can do it, please RSVP to Kim Day polymerclay@gmail.com thanks!



President's Message | president@nwpcg.org

Hellow My Clayer Peoples!

I know, how do the greetings get lamer and lamer each time? Special talent I guess.

It was announced we'd be doing it, but as of August 1st, we cut in half the prices of all new members, and we will credit double the remaining time for previous members (if you paid 8 months ago, you'd have 4 months left on membership, so we will do $4*2 = 8$ months before new expiration – don't worry, you'll get reminder emails when it's expiring as always).

While we love all the current members, we also want to keep growing as a Guild, since fresh faces are always welcome. So if you see a new face at a meeting or a Third Place Clay Day, make them welcome. I'm always open to ideas people have for the Guild, and we have some exciting plans for programs for next year's meetings already.

Due to low sign up for the Washington State Fair demos so far (see blurb in this newsletter if you want to come hang out! I have lots of tickets), it is unlikely we will sign up for it again next year, but we plan to continue our Evergreen State Fair demos.

We have people that volunteered for the open board positions! Thanks so much for helping out, you'll see their names on the ballots in next month's newsletter/meeting. And as always, thanks Ria for making such a beautiful newsletter every month.

It's getting to be that time of the year that if you start now, you still have time to make some special clay gifts for your friends or family for the winter holidays. Feel free to remind me of this whenever you see me, so maybe I'll start sooner rather than later. :)

Happy Claying,

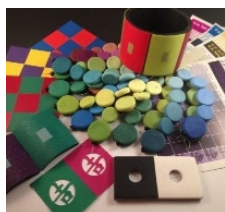
Kim Day

polymerclay@gmail.com

Announcements

By Meredith Arnold

Smashing Color Week with Maggie Maggio



A week of hand-on color exploration using paints, polymer clay, computers and printers in a beautiful teaching studio overlooking the city of Portland, Oregon. Learn how to see color with new eyes and leave with a renewed appreciation for its wonder and complexity. For more information and to register, [click here](#).

Class Fee: \$875

When: Sept. 3 - Sept 7, 2018; 9:00 a.m. - 5:00 p.m.

Where: Portland, OR

Encrusted with Jana Roberts Benzon



Learn Jana's newest approach to creating jewelry using an ingenious and adaptable technique which transforms the work into tiny sculptures. For more information and to register, [click here](#).

Class Fee: \$180

When: Oct. 27 - 28, 2018; 9:00 a.m. - 4:30 p.m.

Polymer Clay with Meredith Arnold



Learn to make polymer clay pendants, beads, earrings, buttons, simple canes and even a box in which to keep them! Learn to condition, mix, cut, bake, polish and seal your clay pieces.

Explore creating textures and patterns using rubber stamps, found objects, metal shape cutters, stencils, acrylic paint, mica powders and more. Go home with original art ready for wear or display.

A \$10 materials fee is due to instructor on the first day in this class taught by Meredith Arnold at the North Seattle College. For more information and to register, [please click here](#).

Class Fee: \$199

When: 8 Tuesdays (24 hours) from Oct. 23 - Dec. 11, 2018; 10:00 a.m. - 1:00 p.m.

Where: CC Bldg Room 1349A, 9600 College Way N Seattle, WA

[NWPCG website](#)



Newsletter Designer: Ria Mendoza Hoyt | newsletter@nwpcg.org

Photos taken during NWPCG events may be used for promotional materials

Copyright © *2018 Northwest Polymer Clay Guild, All rights reserved.

NWPCG Raven logo, © Meredith Arnold 1995 and Ravensdale 2003 logo, © Meredith Arnold, 2002
Any reproduction in whole or in part of copyrighted logos is strictly prohibited without the prior written permission of Meredith Arnold.

You are receiving this email because you are a member of NWPCG or one of NWPCG's friends.

We'd hate to see you go but if you want to change how you receive these emails, you can
UPDATE YOUR PROFILE ([click here](#)) or unsubscribe from this list.

